

Newton North High School

2019-2020 School Profile

“Learning sustains the human spirit.”



457 Walnut Street
Newtonville, Massachusetts 02460

CEEB Code = 221-555
www.newton.k12.ma.us

Counseling Office Phone: 617-559-6230
Counseling Office Fax: 617-559-6249

What Makes Newton North Unique

- Truly comprehensive high school
- Rigorous honors and advanced placement courses
- Career and Technical Education programs offer authentic learning experiences in the following career areas: automotive technology, business, carpentry, culinary arts, design and visual communications, drafting, early education and care, graphic communications, engineering technology, and TV media arts. CTE students have the opportunity to pursue cooperative education workplace learning experiences.
- Students who have asked, been recommended for, and accepted to participate in a CTE program as a major have made a commitment to invest additional time into a career area and therefore receive additional credits. These program majors are leveled the same as our core subject areas; honors and advanced college prep (ACP).
- Students in the TV media arts CTE program produce the school news and documentaries from start to finish.
- College and Career Center staffed by specialized college counselors
- Nationally-ranked science, math, robotics, and mock trial teams
- Over 80 clubs and organizations including model UN, improv and sketch comedy groups, ultimate Frisbee, and one of the first Gay/Straight Alliance groups in the country
- Impressive theater program provides study opportunities in acting, directing, costuming and technical theatre. Produces 12-15 shows annually, including plays, musicals, a full-length Shakespeare production, and a Playwright's Festival featuring original student works
- Vast music department teaches theory, composition, and improvisation. Ten ensembles perform 20-25 concerts annually, both locally and internationally, winning statewide and national awards
- Highly successful athletic program includes more than 30 varsity sports teams. Newton North recently added two teams as part of a unified basketball and track league that gives students with and without intellectual disabilities the opportunity to train and compete for their respective schools. Recent D1A championships include: 2016 boys outdoor track and field and 2017 girls volleyball
- National award-winning online newspaper and literary magazine
- Numerous travel, exchange, and service programs to destinations including China, France, Spain, Prague, Central America, and New Orleans
- Demonstrated success at narrowing the achievement gap
- Special mentoring program for our scholars of color (Dover Legacy Scholars) and first generation families (Transitioning Together)
- Strong commitment to English language learner and special education programs
- Open campus policy for students in grades 10-12

City of Newton

Newton, a suburb of Boston, is a small city with a population of approximately 86,000. Its population is heterogeneous with a large proportion of academic, business, and professional families. The citizens of Newton strongly support its public schools. Newton's excellent educational system attracts families from all over the world. Our students come from many other states and more than 70 foreign countries and speak more than 30 languages. Our diverse city is further enhanced by the METCO program, which brings students of color from Boston, and the EDCO program, which is a regional program for deaf and hard of hearing students.

David Fleishman, Ed.D.
Superintendent of Schools

Henry Turner, Ed.D.
Principal

Beth Swederskas 6230
Counseling Department Chair

Sarah Foley 6230
Counseling Exec. Asst.

College Counselors	Extension
Jennifer Geraghty	6348
Jillian Hall	6349
Melissa Hanenberger	6347

School Counselors	Extension
Brendan Amedio	6242
Nancy Decoteau	6275
Matthew Ford	6234
Jolleen Filio	6230
Kyle Greenidge	6244
Amanda Griffin	6235
Belma Johnson	6232
Michele Kennedy	6236
Shani Leichter	6245
Patrick Manning	6231
Christine Potter	6241
Kyra Slawski	6233
Beth Swederskas	6230
Jessica Volmer	6251

Alison Malkin 6237
Prevention/Intervention Counselor

Jenn Pontillo 6293
Clinical Care Counselor

Elvin Cardona 6416
METCO Engagement Specialist

Andrea Koenig 617-559-6400
EDCO Program for the Deaf and Hard of Hearing ex 454547

Patricia Niro 6248
Records Office 6257
Main Office Fax 6204

Tricia Stamper 6247
Registrar

Phone: 617-559 - 4 digits listed above
Email: lastnamefirstinitial@newton.k12.ma.us
For example: turnerh@newton.k12.ma.us

School Facts

Total enrollment: 2,124
Class of 2020 enrollment: 554
Total faculty: 234
Average class size: 16.2
Teaching faculty with advanced degrees: 98%
Student : Faculty ratio: 11.5 : 1

Student Demographic Profile

African American or Black: 5.9%
American Indian: 0.4%
Asian: 15.3%
Hispanic or Latino: 9.4%
Multi-race, Non-Hispanic: 5.7%
White: 63.2%
Economically Disadvantaged: 11.6%

Graduating Class of 2019

Enrollment: 532 students
Total to post-secondary education: 93.4%
Attending four-year colleges: 87.3%
Attending two-year colleges: 5.3%
Gap year before entering college: 5.3%
Other, including employment and military: 4.0%

Course Distribution Requirements

A student must earn at least 100 credits to graduate (at 5 credits per full year course).

The credits must include:

English:	20
Biological Science:	5
Physical Science/Chemistry:	5
History and Social Sciences:	10
United States History:	5
Mathematics:	10
Fine, Performing & Technical Arts:	5
Physical Education:	5

The standard science course sequence is:

Grade 9:	Physics
Grade 10:	Chemistry
Grade 11:	Biology
Grade 12:	Science Elective

Course Catalog:

<https://www.newton.k12.ma.us/Page/2656>

Explanation of Course Levels

Students may take courses in all three curriculum levels during the same year. Considerable work outside of class is required at each level. In all levels, students develop appropriate skills to work effectively in the subject area.

While world language is not required, most students complete two years or more of the one of the following languages: Spanish, Chinese, French, Italian, and Latin.

Please note: Some elective courses do not carry a level.

Advanced Placement / Honors (AP / H)

- These courses contain challenging material taught at an accelerated pace.
- Advanced placement courses are taught in the following areas: American history, art history, Italian, biology, calculus AB & BC, chemistry, Chinese, comparative government, English, European history, French, Latin, physics, psychology, Spanish, and statistics.
- Due to the rigor of AP and honors courses, we strongly recommend that students take no more than three courses at this level in one year. Most AP courses are only open to seniors.
- There are 17 AP and 87 honors courses offered.

Advanced College Prep (ACP)

- These courses are challenging college preparatory courses.
- They require that students have high interest, strong academic skills, and the capacity to do independent work.

College Prep (CP)

- These courses generally cover the same topics as advanced college prep courses and prepare students for college.
- Smaller classes, a more structured environment and in some cases, team teaching allows for more individual attention.

Grade Point Average

Newton North does not report numerical rank in class; however, a weighted GPA is calculated on a 5.0 scale.

- Each student's weighted grade point average for grades 10 and 11 is reported to colleges on the transcript.
- GPA is first calculated mid-year Junior year.
- Only courses that have an assigned curriculum level are used in calculating the GPA.
- Only courses taken within Newton Public Schools are calculated in the GPA.
- Summer school courses are not calculated in the GPA.

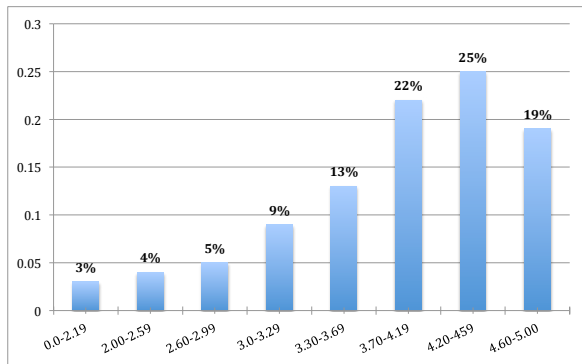
Please note: Some transfer students do not have a Newton North GPA.

Class of 2020 GPA Histogram

September 19, 2019

Total Class Size: 554

Number of students included: 533



Weighted Grade Point Average

Table of Weights			
Grade	Curriculum Level		
	CP	ACP	H
A	4.0	4.5	5.0
A-	3.7	4.2	4.7
B+	3.3	3.8	4.3
B	3.0	3.5	4.0
B-	2.7	3.2	3.7
C+	2.3	2.8	3.3
C	2.0	2.5	3.0
C-	1.7	2.2	2.7
D+	1.3	1.8	2.3
D	1.0	1.5	2.0
D-	0.7	1.2	1.7
F	0.0	0.0	0.0
N	0.0	0.0	0.0

Computing the Weighted GPA

- For each leveled course, multiply the weight of the final grade by the credit value.
- Divide the total in #1 by the total credits for courses being included. The result is the weighted GPA.
- Marks in grade 9 are not included. Only courses which have been assigned a curriculum level are used in calculating the GPA.
- Students must have taken at least 25 credits in leveled courses at NNHS to be included in the histogram.
- Achievement of 5.0 is possible.

Class of 2019 National Merit Scholarships

Scholarships: 5 Finalists: 13

Semi-Finalists: 14

Letters of Commendation: 47

Career and Technical Education Programs 5-Year Positive Placement Data 2013-2017

Program	2013	2014	2015	2016	2017
Automotive	72%	100%	100%	100%	100%
Carpentry	75%	100%	100%	100%	100%
Culinary Arts	100%	90%	100%	100%	100%
Drafting	83%	90%	100%	100%	100%
Early Education & Care	100%	90%	100%	100%	100%
Graphic Communications	89%	90%	100%	100%	100%
Design & Visual Communications	85%	100%	100%	100%	100%
TV Media Arts	100%	90%	100%	100%	100%

Positive Placement data includes the number of students in postsecondary education, military service, and/or employed.

Newton Public Schools Annual SIMS Data reported to the DESE by November 30th each school year.

Class of 2019 College Admission Test Scores

SAT Scores

Mean: Critical Reading and Writing: 627 Math: 639

Number of seniors taking SAT reasoning test: 447

Number of seniors taking SAT subject test: 213

SAT Subject Test	# Taking Test	Mean
Chemistry	102	678
Chinese with listening	1	680
Ecological Biology	25	681
English Literature	46	664
French I	4	633
German	1	650
Italian I	2	675
Japanese with listening	2	755
Latin	3	675
Math Level I	33	675
Math Level II	126	745
Modern Hebrew	3	770
Molecular Biology	29	637
Physics	10	687
Spanish I	22	648
US History	89	699
World History	25	604

ACT Scores

Number of students taking ACT: 177

Subject	Mean
English	27.6
Mathematics	27.2
Reading	28.3
Science	27.1
Composite	27.5

Spring 2019 Advanced Placement Tests

568 students sat for 1,135 exams in 23 subjects.

92% of exam scores were 3 or better.

AP Test	# Taking Test	% with 3+
Biology	59	95
Calculus AB	111	64
Calculus BC	105	100
Chemistry	77	92
Chinese Lang & Culture	19	100
Comparative Gov't & Politics	37	97
Computer Science A	1	100
Computer Science Principles	35	94
English Lang & Comp	66	95
English Lit & Comp	19	100
European History	27	93
French Lang & Culture	18	100
Italian Lang & Culture	13	100
Microeconomics	2	100
Music Theory	14	79
Physics: Electricity & Magnetism	3	100
Physics: Mechanics	81	96
Psychology	146	96
Spanish Language & Cult.	34	100
Statistics	154	87
Studio Art: Drawing Portfolio	1	100
US History	108	96
World History	1	100

Overall Score Distribution:

5: 46% 4: 27% 3: 16% 2: 7% 1: 1%

College matriculations of two or more Newton North High School students for the three most recent graduating classes (2017, 2018, 2019)

American University	Keene State College	The Ohio State University
Amherst College	Lasell University	The University of Alabama
Assumption College	Lehigh University	The University of Arizona
Babson College	Lesley University	The University of North Carolina at Chapel Hill
Bard College	Lewis & Clark College	The University of Tampa
Barnard College	Macalester College	The University of Texas, Austin
Bates College	Massachusetts Bay Community College	The University of the Arts
Bennington College	Massachusetts College of Art and Design	Trinity College
Bentley University	Massachusetts College of Pharmacy & Health Sciences (MCPHS)	Tufts University
Berklee College of Music	Massachusetts Institute of Technology	Tulane University
Boston Architectural College	McGill University	Union College (New York)
Boston College	Merrimack College	University of California, Los Angeles
Boston University	Middlebury College	University of California, San Diego
Brandeis University	Middlesex Community College	University of California, Santa Barbara
Bridgewater State University	Mount Holyoke College	University of California, Santa Cruz
Brown University	Muhlenberg College	University of Chicago
Bryant University	New York University	University of Colorado at Boulder
Bryn Mawr College	Nichols College	University of Connecticut
Bucknell University	North Carolina State University	University of Denver
Carleton College	North Shore Community College	University of Hartford
Carnegie Mellon University	Northeastern University	University of Illinois at Urbana-Champaign
Case Western Reserve University	Northwestern University	University of Maine
Champlain College	Norwich University	University of Maryland, College Park
Chapman University	Oberlin College of Arts and Sciences	University of Massachusetts Dartmouth
Clark University	Occidental College	University of Massachusetts, Amherst
Colby College	Pace University, New York City	University of Massachusetts, Boston
Colgate University	Pennsylvania State University	University of Massachusetts, Lowell
Colorado College	Pitzer College	University of Miami
Colorado State University	Princeton University	University of Michigan
Columbia University	Providence College	University of New Hampshire at Durham
Connecticut College	Purdue University	University of North Carolina School of the Arts
Cornell University	Queen's University	University of Oxford
Dartmouth College	Quinnipiac University	University of Pittsburgh
DePaul University	Regis College	University of Rhode Island
Dickinson College	Rensselaer Polytechnic Institute	University of Rochester
Drexel University	Rhode Island School of Design	University of South Carolina - Columbia
Duke University	Rochester Institute of Technology	University of Southern California
Elon University	Roger Williams University	University of Southern Maine
Emerson College	Roxbury Community College	University of Toronto
Emmanuel College	Rutgers University	University of Vermont
Emory University	Sacred Heart University	University of Victoria
Endicott College	Saint Anselm College	University of Virginia
Fairfield University	Salem State University	University of Washington
Fisher College	San Diego State University	University of Wisconsin, Madison
Fitchburg State University	Sarah Lawrence College	Vanderbilt University
Framingham State University	Savannah College of Art and Design	Vassar College
Franklin & Marshall College	Scripps College	Villanova University
Franklin Pierce University	Simmons University	Virginia Tech
Gallaudet University	Skidmore College	Wake Forest University
George Mason University	Smith College	Washington University in St. Louis
Georgetown University	Southern New Hampshire University	Wellesley College
Georgia Institute of Technology	Springfield College	Wentworth Institute of Technology
Grinnell College	St. John's University	Wesleyan University
Hamilton College - NY	St. Lawrence University	West Virginia University
Harvard College	Stonehill College	Westchester Community College
High Point University	Stony Brook University	Western New England University
Hobart and William Smith Colleges	Suffolk University	Wheaton College MA
Hofstra University	Swarthmore College	William & Mary
Indiana University at Bloomington	Syracuse University	Williams College
Ithaca College	Temple University	Worcester Polytechnic Institute
Johns Hopkins University	The George Washington University	Worcester State University
Johnson & Wales University (Providence)	The New School - All Divisions	