



NEWTON PUBLIC SCHOOLS

Enrollment Analysis Report 2011-12 to 2016-17

December 8, 2011

(October 1, 2011 Enrollment)





Seven Years of Growth

+654 students +6%

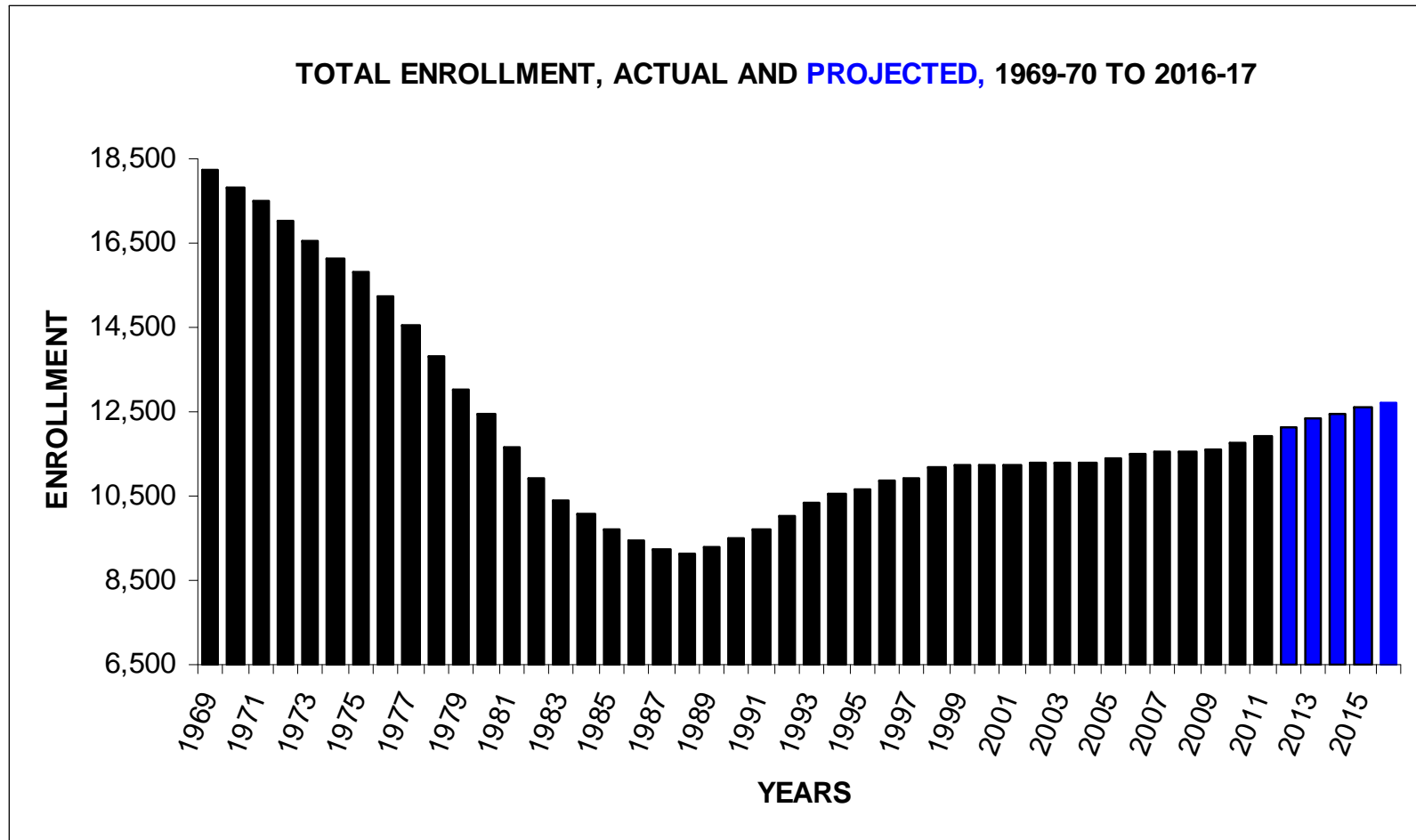
CURRENT ENROLLMENT VS. 2010-11	11,922	+147
Elementary Enrollment	5,687	+41
Middle School Enrollment	2,667	+117
High School Enrollment	3,568	-11

Trend to Continue in Next 5 Years

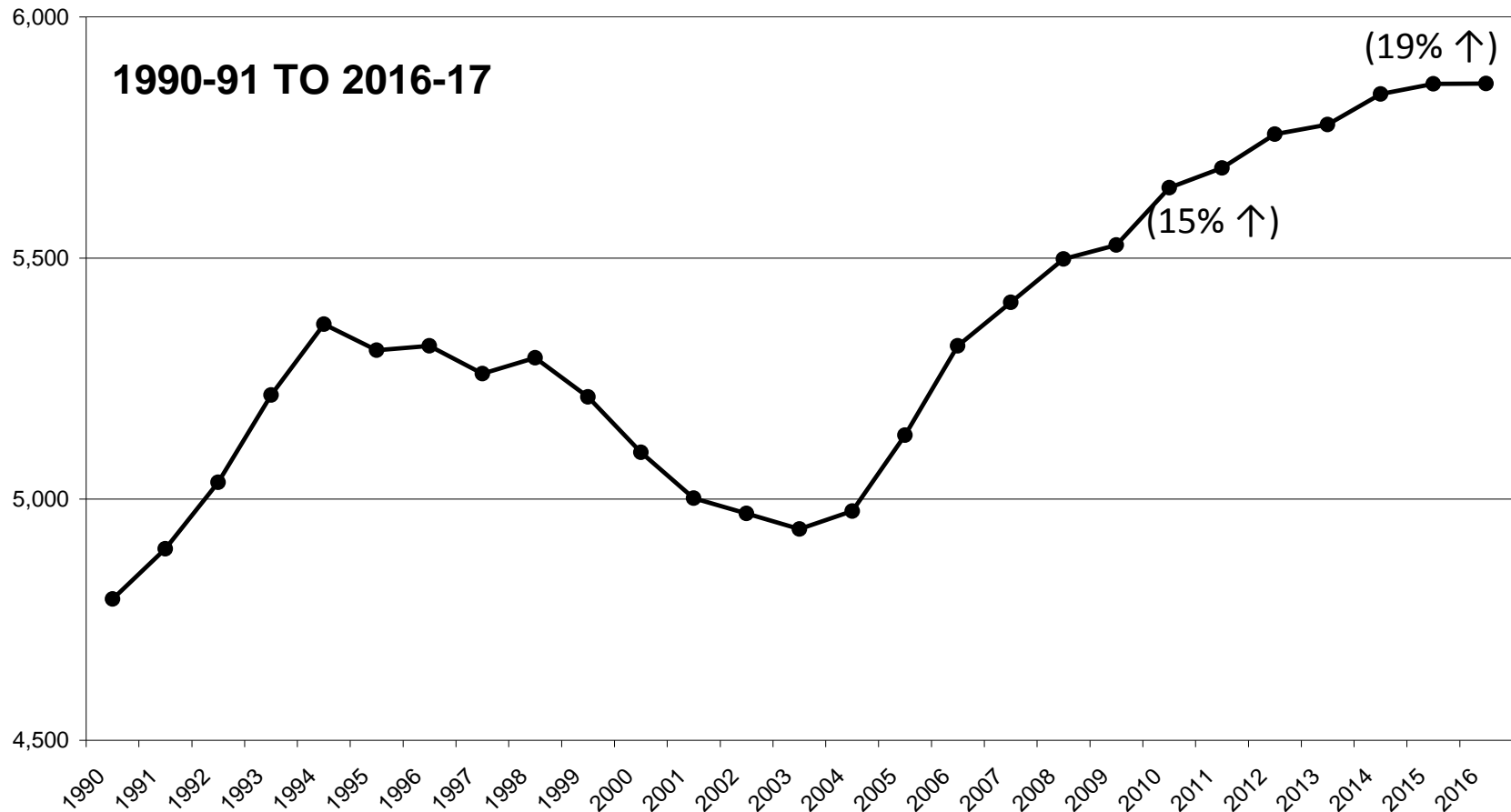
+774 students +7%

Enrollment History

1969-70 to 2016-17



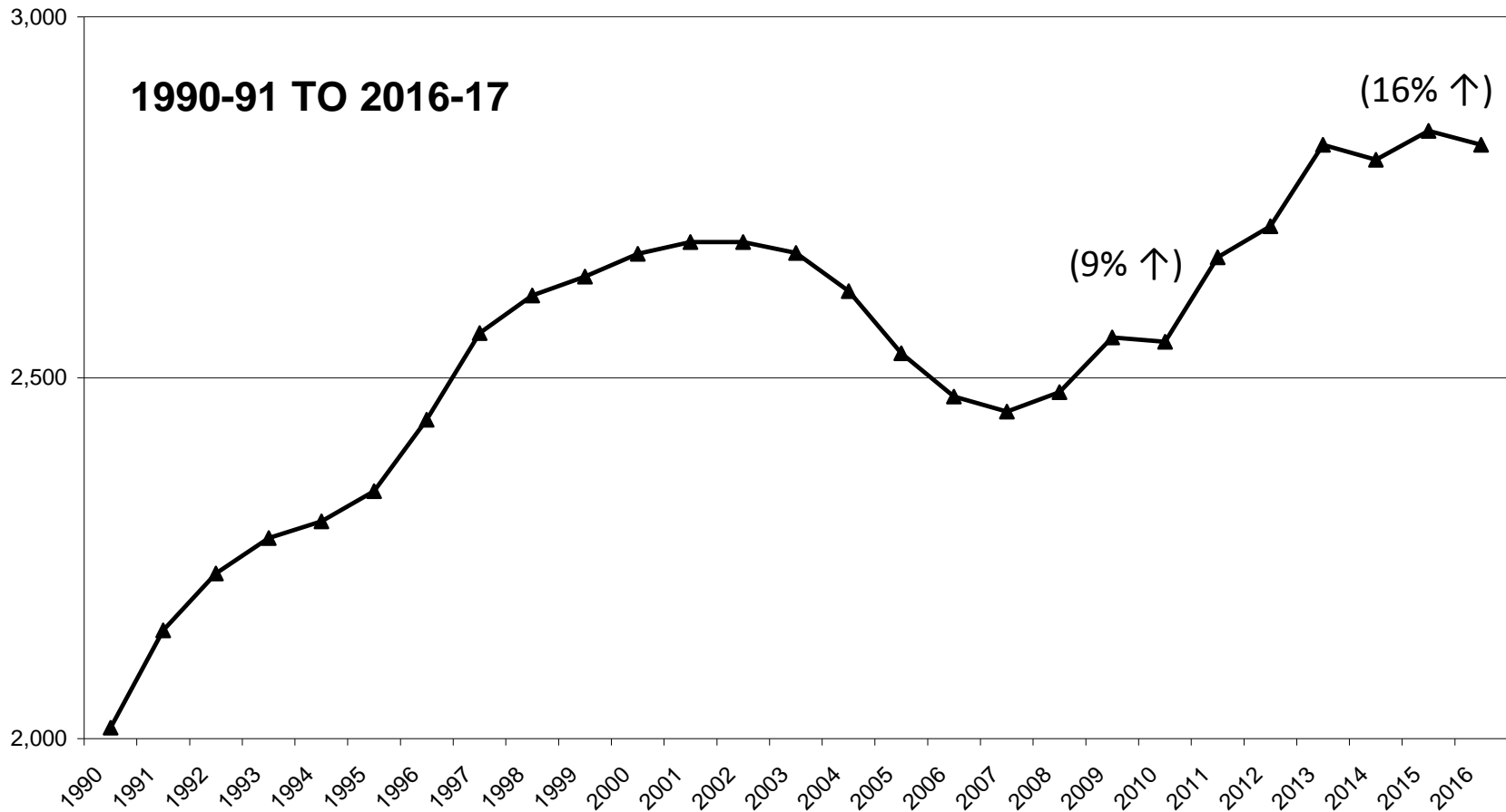
Elementary Schools



➤ Growth continues with +749 (15%) students since 2003-04

➤ +924 (19%) by 2016-17

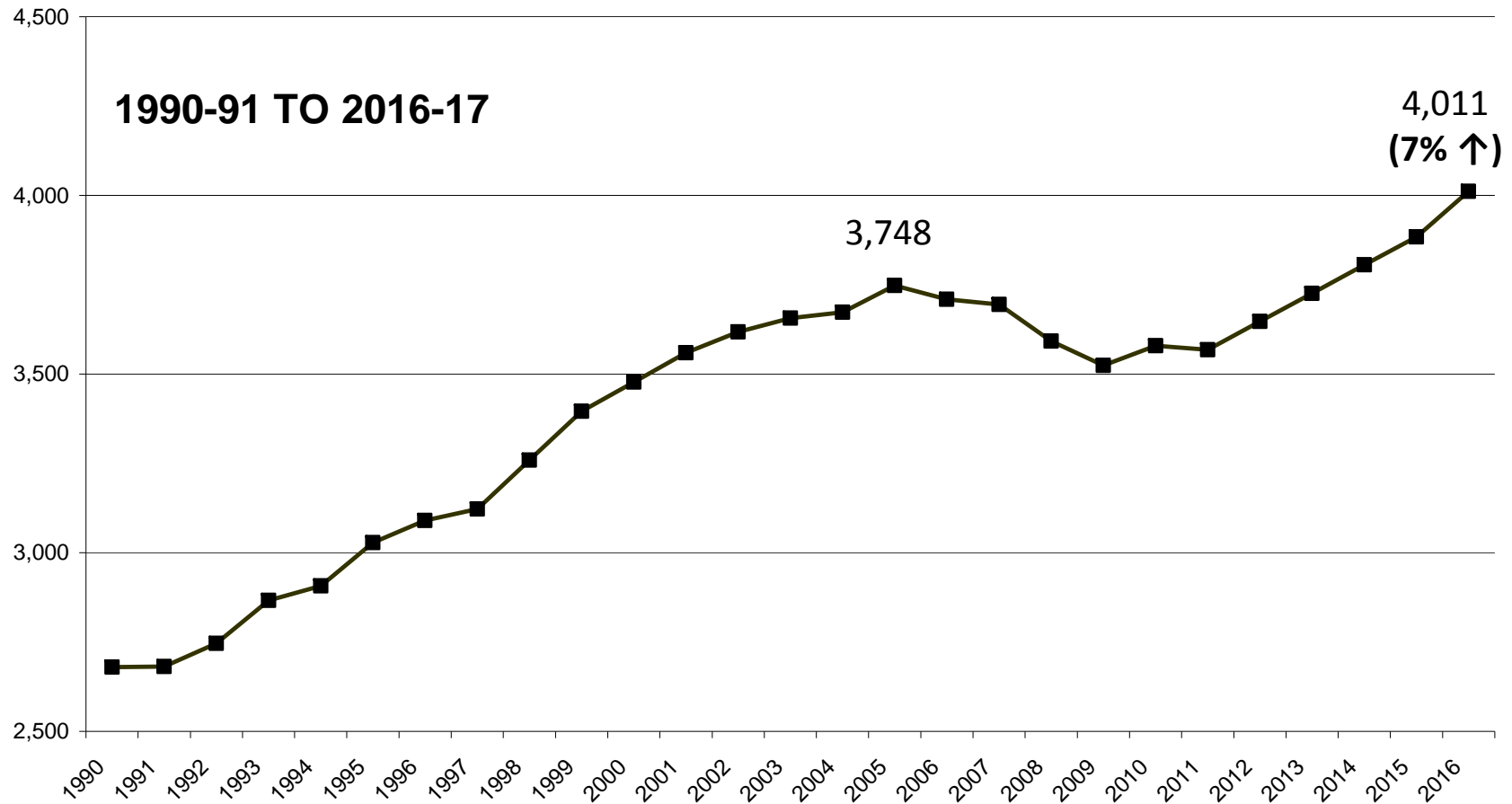
Middle Schools



➤ + 214 students (9%) in past 4 years

➤ + 389 students (16%) by 2015-16

High Schools



- Peaked in 2006 at 3,748 students
- + 4,011 (7%) students by 2016-17

Enrollment Changes

Last Six Years

Next Five Years

	2004-05	2011-12	Change	%	2011-12	2016-17	Change	%
Elem.	4,975	5,687	712	14%	5,687	5,862	175	3%
Middle	2,620	2,667	47	2%	2,667	2,823	156	6%
High	3,673	3,568	-105	-3%	3,568	4,011	443	12%
Total	11,268	11,922	654	6%	11,922	12,696	774	7%

Projected Kindergarten Trends

2011-12 Actual	2012-13	2013-14	2014-15	2015-16	2016-17
895	903	934	879	905	897

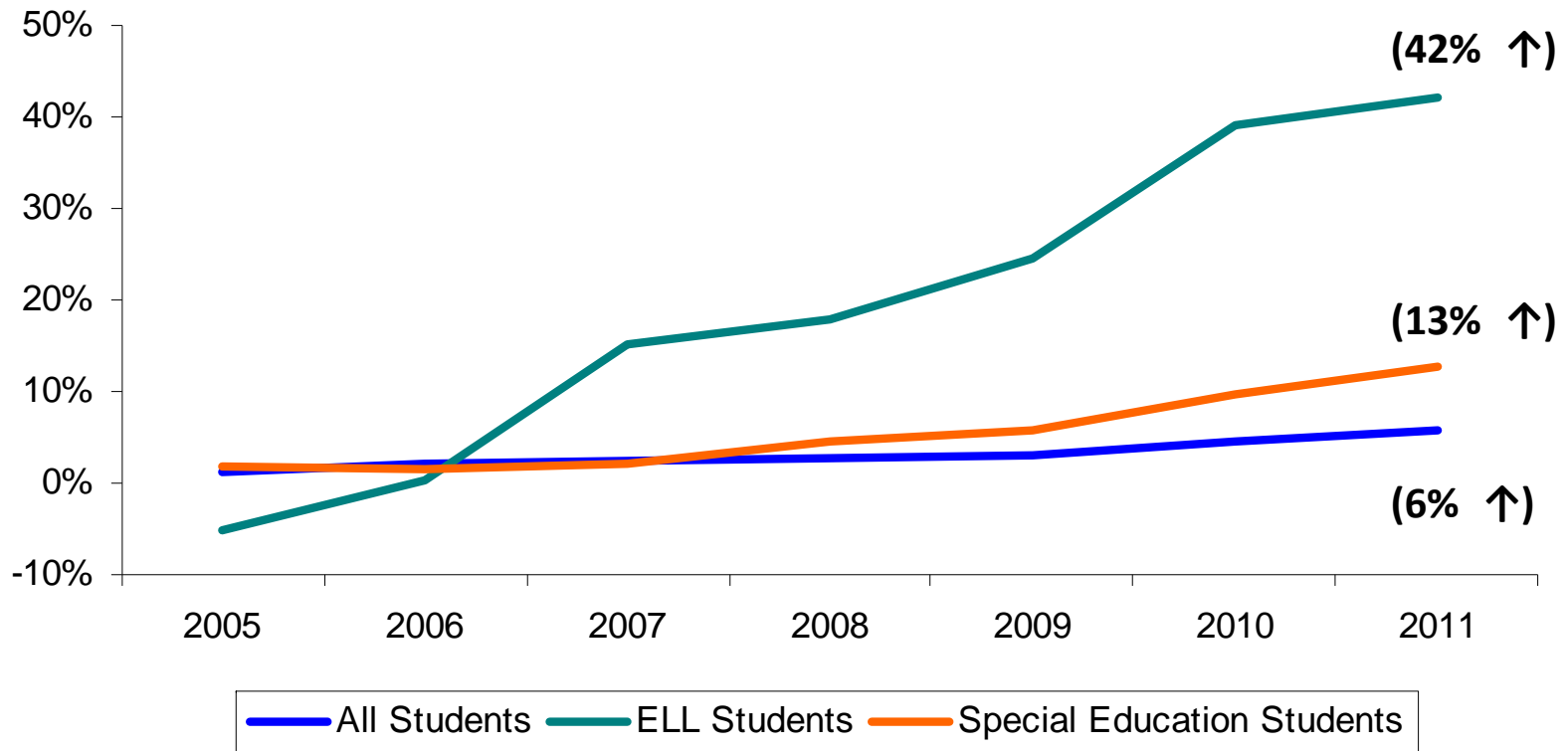
➤ **3rd largest Kindergarten since the 1970's @ 895**

Ratio of Children Age 4 to K Population

Year	2002	2003	2004	2005	2006	2007	2008	2009	2010	2011
4-year olds	828	796	767	770	723	744	683	686	705	708
K population	792	796	805	867	887	868	830	862	896	895
Ratio	0.96	1.00	1.05	1.13	1.23	1.17	1.22	1.26	1.27	1.26

Growth of Special Populations

Percentage Enrollment Change Since 2004-05



Residential Complexes

School	Avalon at Newton Highlands	Avalon at Chestnut Hill	Arborpoint at Woodland	Total
Angier	4*			4
Bowen		2		2
Cabot	1			1
Countryside	41			41
Mason-Rice		1		1
Memorial-Spaulding	3	40		43
Peirce			14	14
Williams			6	6
Zervas			1	1
Bigelow	1			1
Brown	8		2	10
Day			5	5
Oak Hill	1	16	3	20
Newton North	1	1	8	10
Newton South	25	13	2	40
Total	85	73	41	199
Difference from 2 Years Ago	+21	+24	-2	+43

* Assigned to Angier as a result of the Angier-Countryside buffer zone established in June 2011.

Projection Method Accuracy

System-wide

2004-05	+0.3%
2005-06	+1.6%
2006-07	+0.5%
2007-08	-1.5%
2008-09	-0.5%
2009-10	+0.4%
2010-11	+0.7%
2011-12	+0.2%

National, State and Local Trends

Population growth between 2000 and 2010:

- United States up 10% to 308.7 million
- Massachusetts up 3% to 6.5 million
- City of Newton up **2%** to 85,146 (+net of 1,317)

Population growth of school aged children in Newton:

- School aged children up by **over 11%** from 2000 to 2010 and from 1990 to 2000
- School population growth in Newton is not typical of Massachusetts as a whole but is true of certain suburbs of Boston.