

# Facilities Update

## Day and Elementary Modulars

September 26, 2011

# Two Options for Day\*

	HMFH (Preferred)	RDA (C.1.e)	Difference
Program Space (6 Classrooms)	\$2,004,181	\$1,930,423	\$73,758
Site Work/Hazardous Material Abatement	\$468,142	\$468,142	\$0
Insurance/Overhead/Profit of 37.9%	\$937,010	\$909,056	\$27,954
Architect/Engineering/Clerk/Contingency	\$870,867	\$865,781	\$5,086
<b>Total Project Costs</b>	<b>\$4,280,200</b>	<b>\$4,173,402</b>	<b>\$106,798</b>
Additional Alternate Space Needs:			
Renovate West Entry and Add 2 Small Teaching Spaces	\$332,273	\$0	\$332,273
Equip One Science Classroom	\$198,645	\$0	\$198,645
5% Contingency	\$26,546	\$0	\$26,546
<b>Total Additional Alternate Space Needs</b>	<b>\$557,464</b>	<b>\$0</b>	<b>\$557,464</b>
<b>Total Project Cost including Additional Space</b>	<b>\$4,837,664</b>	<b>\$4,173,402</b>	<b>\$664,262</b>

\* Does not include sprinkler and life safety costs.

# Cost of Modulares and Day

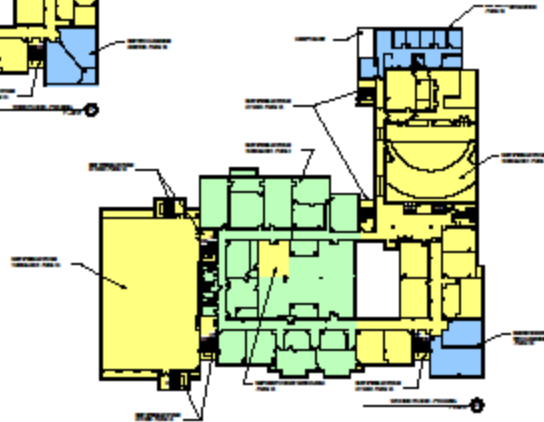
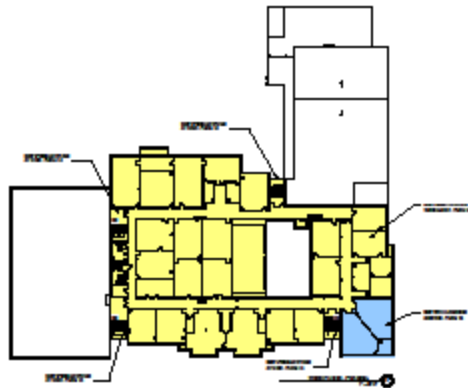
---

## Modulars:

Four New Modulars (Triumph) including Design \$997,880

	HMFH (Preferred)	RDA (C.1.e)	Difference
<b>Modulars and Day:</b>			
Four New Modulars	\$997,880	\$997,880	\$0
Day Project without Additional Space	\$4,280,200	\$4,173,402	\$106,798
<b>Total Modulars and Day (without Additional Space)</b>	<b>\$5,278,080</b>	<b>\$5,171,282</b>	<b>\$106,798</b>
Four New Modulars	\$997,880	\$997,880	\$0
Day Project with Additional Space	\$4,837,664	\$4,173,402	\$664,262
<b>Total Modulars and Day (with Additional Space)</b>	<b>\$5,835,544</b>	<b>\$5,171,282</b>	<b>\$664,262</b>

---



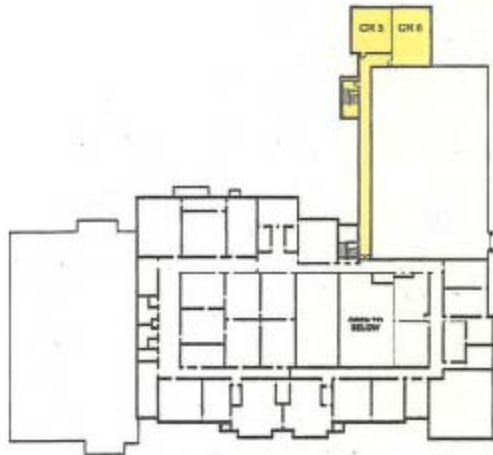
**Moving Plan**

Activity	Start	End	Phase 1	Phase 2	Phase 3	Phase 4	Phase 5	Phase 6	Phase 7	Phase 8	Phase 9	Phase 10
1. Construction of new wing	08/15/2010	08/15/2010										
2. Construction of new wing	08/15/2010	08/15/2010										
3. Construction of new wing	08/15/2010	08/15/2010										
4. Construction of new wing	08/15/2010	08/15/2010										
5. Construction of new wing	08/15/2010	08/15/2010										
6. Construction of new wing	08/15/2010	08/15/2010										
7. Construction of new wing	08/15/2010	08/15/2010										
8. Construction of new wing	08/15/2010	08/15/2010										
9. Construction of new wing	08/15/2010	08/15/2010										
10. Construction of new wing	08/15/2010	08/15/2010										
11. Construction of new wing	08/15/2010	08/15/2010										
12. Construction of new wing	08/15/2010	08/15/2010										
13. Construction of new wing	08/15/2010	08/15/2010										
14. Construction of new wing	08/15/2010	08/15/2010										
15. Construction of new wing	08/15/2010	08/15/2010										
16. Construction of new wing	08/15/2010	08/15/2010										
17. Construction of new wing	08/15/2010	08/15/2010										
18. Construction of new wing	08/15/2010	08/15/2010										
19. Construction of new wing	08/15/2010	08/15/2010										
20. Construction of new wing	08/15/2010	08/15/2010										

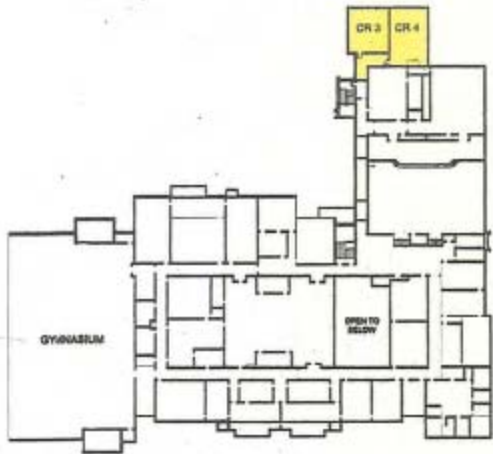
# F. A. Day Middle School

HMFH Option  
Newton, MA





THIRD FLOOR PLAN



SECOND FLOOR PLAN



FIRST FLOOR PLAN

# F. A. Day Middle School

RDA C.1.e Option  
Newton, MA



# F.A. Day Middle School

## Program of HMFH Option against RDA Option C.1.e

### HMFH Option - Program

Space Program	Square Foot Area	Gross Square Foot Area
<b>6 Classrooms + Support Spaces</b>		6,750
<b>1st Floor Renovation</b>		
Bridge Classroom	889	
Office	156	
Quiet Room	99	
Study Room	95	
Classroom	678	
<b>2nd Floor Renovation</b>		
Science Classroom	1,184	
Classroom	765	
<b>3rd Floor Addition</b>		
Classroom 1	883	
Classroom 2	915	
Small Group Room	170	
<b>2-Story Addition</b>		5,471
<b>Main Entrance</b>		
Vestibule	126	
Lobby	393	
<b>Administration Suite</b>		
Reception/Waiting	422	
Principal's Office	269	
Assistant Principal's Office 1	145	
Assistant Principal's Office 2	170	
Health Suite	305	
Quiet Room	42	
Unisex Toilet Room	60	
Circulation/Mail Cubbies/Storage	237	
<b>Student Services Suite</b>		
Conference Room	257	
Circulation/Lounge/Storage	1,163	
Guidance Office 1	169	
Guidance Office 2	169	
Guidance Office 3	169	
Guidance Office 4	169	
Guidance Office 5	178	
Guidance Office 6	176	
Unisex Toilet Room	63	
<b>Expansion of Cafeteria</b>		750
Expansion of Cafeteria	750	
<b>West Entry Reconfiguration</b>		1,500
<b>Temporary Classrooms</b>		
Temporary Classroom 1	710	
Temporary Classroom 2	716	
<b>New Entry and Small Teaching Spaces</b>		
Vestibule	145	
Small Teaching Space 1	316	
Small Teaching Space 2	390	
<b>Total Gross Square Foot Area</b>		<b>14,471</b>

### RDA Option C.1.e - Program

Space Program	Square Foot Area	Gross Square Foot Area
<b>3-Story Addition</b>		6,175
<b>Main Entrance</b>		
Vestibule	100	
<b>1st Floor Addition</b>		
Classroom 1	896	
Classroom 2	896	
<b>2nd Floor Addition</b>		
Classroom 1	896	
Classroom 2	1,176	
<b>3rd Floor Addition</b>		
Classroom 1	896	
Classroom 2	1,176	
<b>Circulation</b>		2,457
1st Floor Corridor	400	
2nd Floor Corridor	340	
3rd Floor Corridor	340	
Extension of Existing Stair to 3rd Floor	385	
New 3rd Floor Corridor to Addition	992	
<b>Expansion of Cafeteria</b>		750
Expansion of Cafeteria	750	
<b>Total Gross Square Foot Area</b>		<b>9,382</b>