

Newton Public Schools 2012 MCAS Results

School Committee Presentation

12/10/2012

Presentation Topics

- District results and trends in comparison to the state, and comparable communities
- Class of 2014 cohort achievement and progress
- Race and subgroup achievement and progress



MCAS Metrics

- Achievement/Proficiency: Scores indicate how students are achieving relative to state standards.
- Growth: Growth scores compare students' progress relative to other students throughout the state with similar test histories.
- Accountability: New Progress and Performance Index

Newton's Results ...

- Our students consistently score significantly above the state average on each and every state achievement measure.
- Our students perform at comparable or higher levels to those of students in similar communities.
- Our growth measures are well above the state average and higher than many of our peer districts.
- Our students perform well beginning in the early grades, and their scores steadily rise over the years.
- We are beginning to see success in narrowing the achievement gaps especially in the upper grades.

Figure 1

Newton Public Schools 2001-2012 Grade 10 ELA: Percent Proficient and Advanced

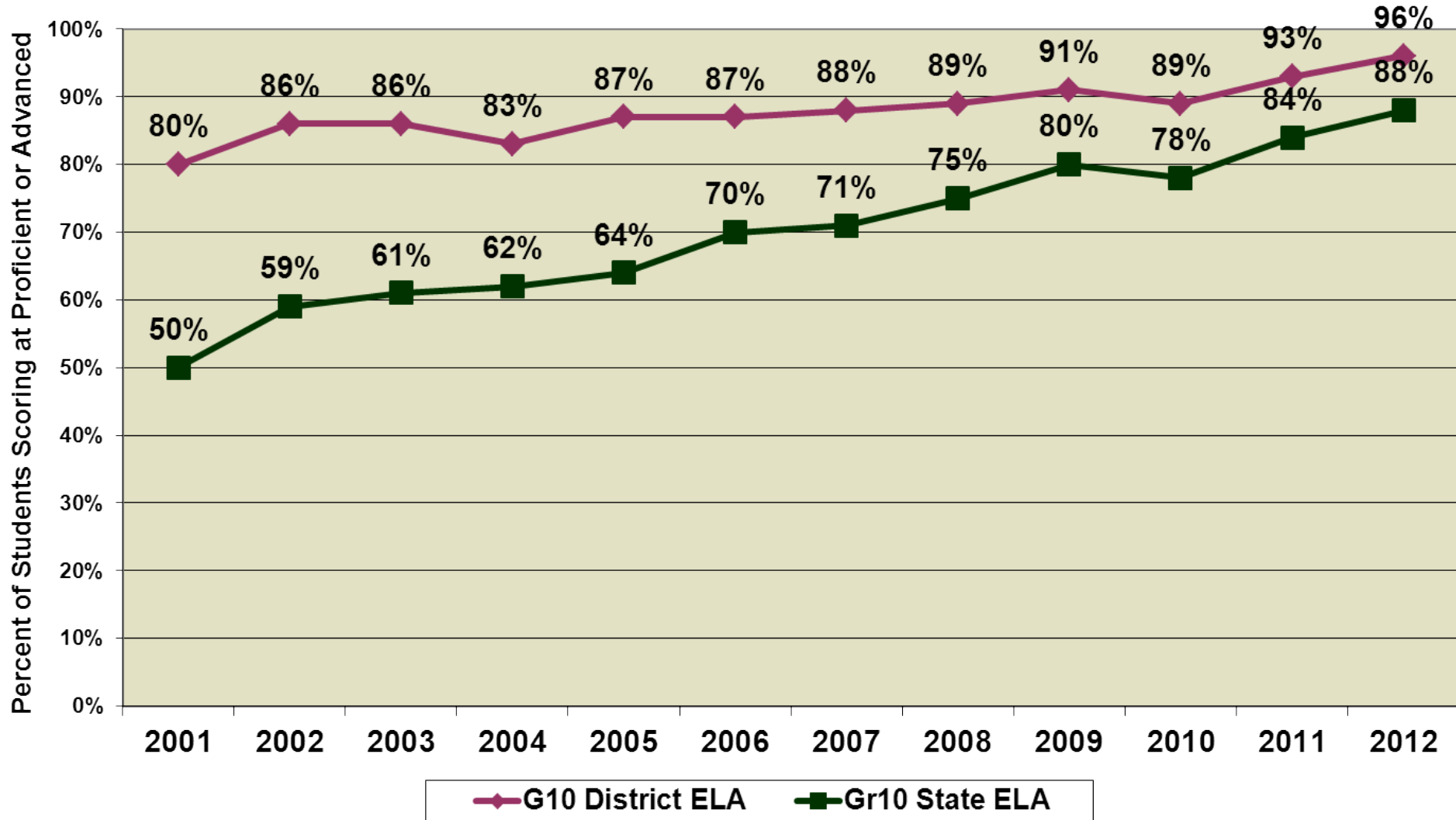


Figure 2

Newton Public Schools 2001-2012 Grade 10 Math: Percent Proficient or Advanced

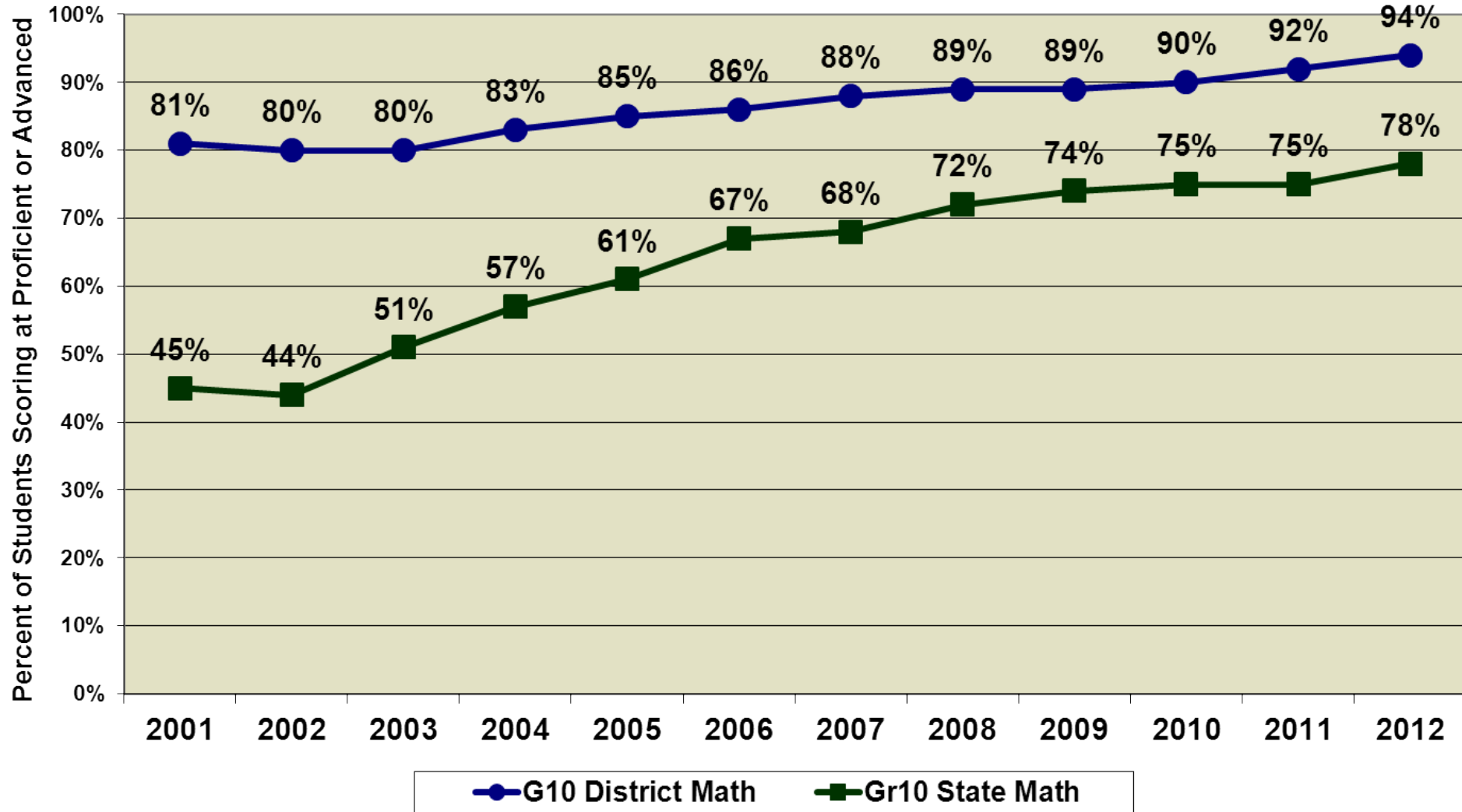
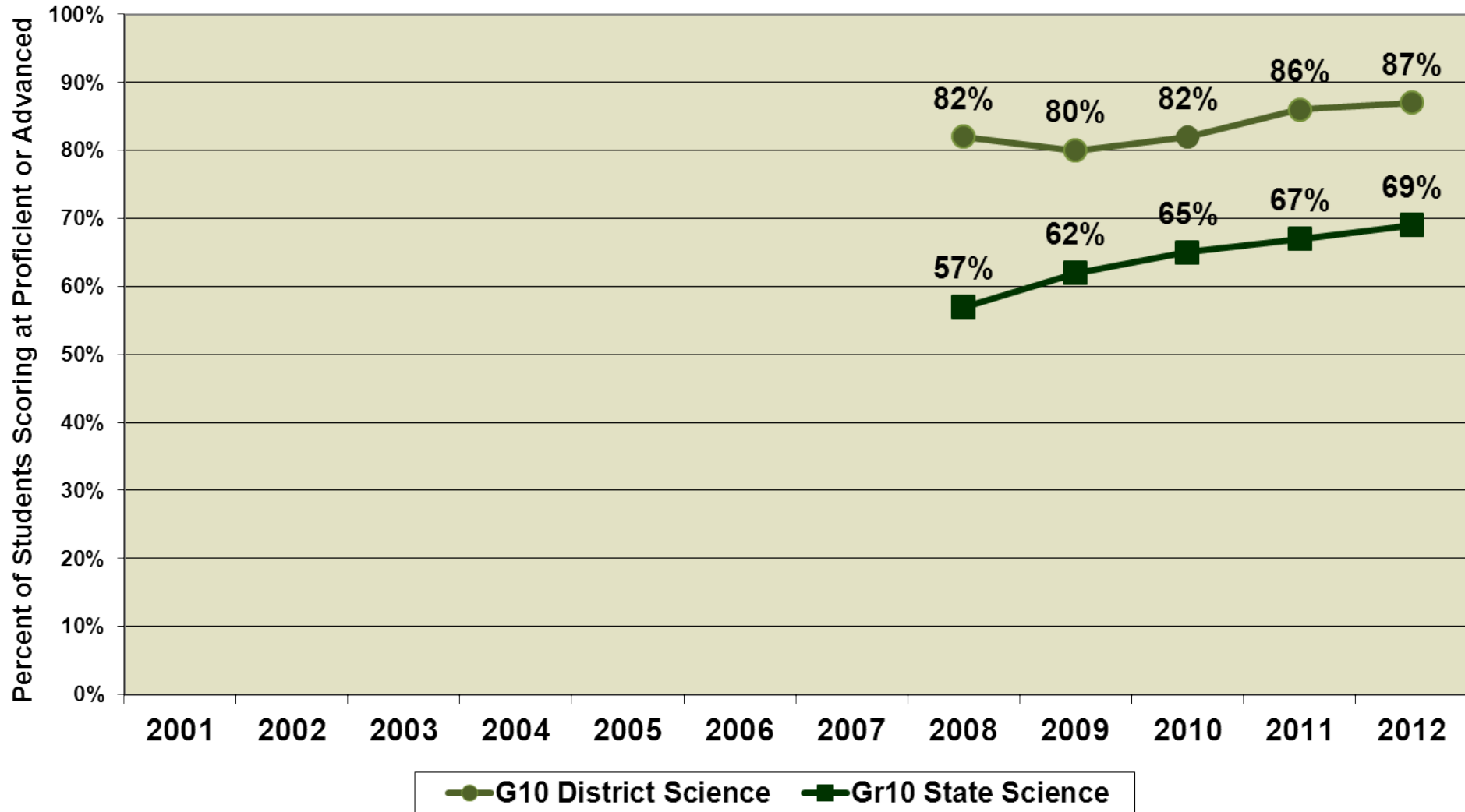


Figure 3

Newton Public Schools
2008-2012 Grade 10 Science and Technology/Engineering:
Percent Proficient or Advanced



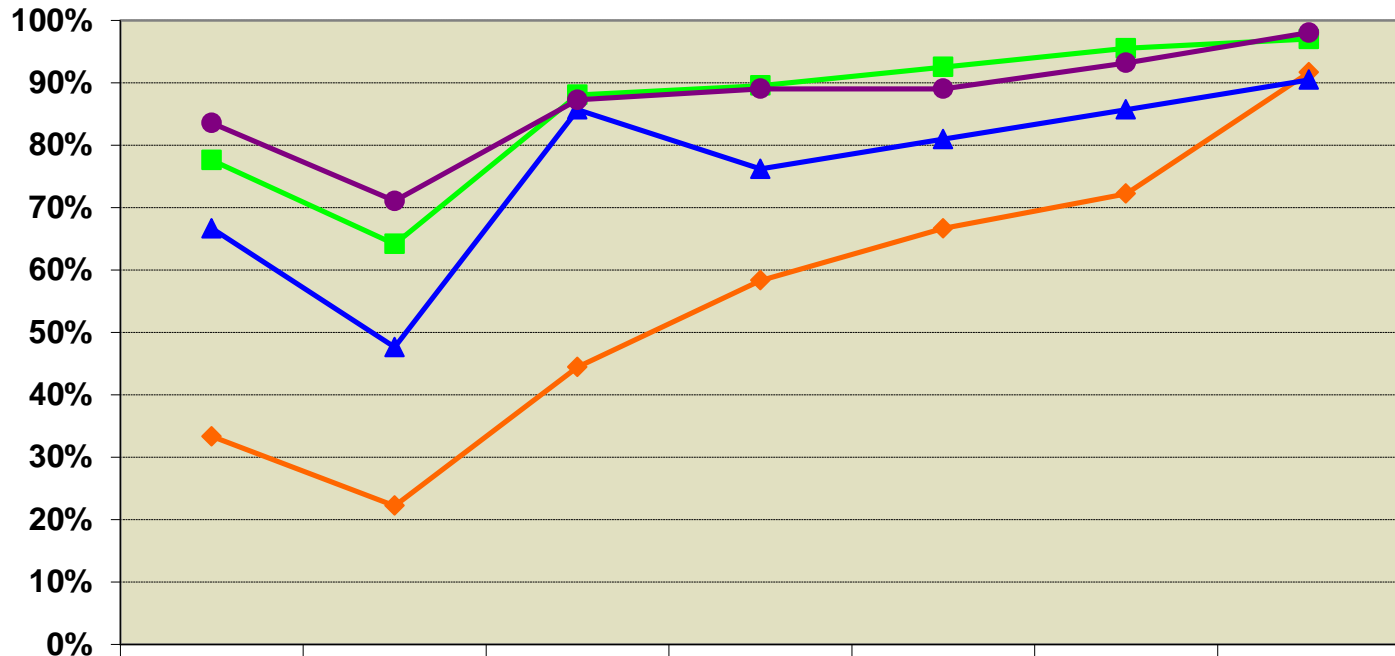
NPS Achievement Gaps

- African American students
- Low income students
- Students with disabilities
- Hispanic students

- These gaps are most pronounced in the early grades, with marked improvement over the years.
- 2012 results show progress towards closing gaps.

Class of 2014 Exact Cohort - ELA

ELA MCAS: Percent Scoring \geq Proficient by Race Subgroup

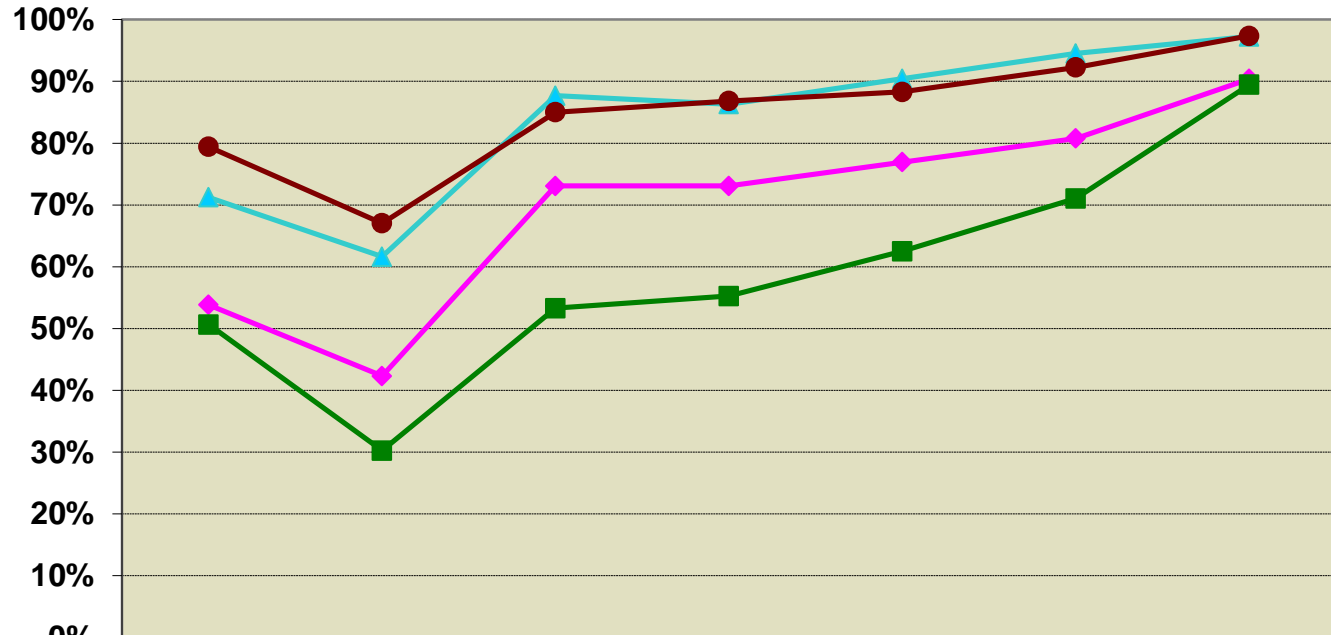


◆ African American
■ Asian
▲ Hispanic
● White

| | 2005 Gr3 | 2006 Gr4 | 2007 Gr5 | 2008 Gr6 | 2009 Gr7 | 2010 Gr8 | 2012 Gr10 |
|------------------|-------------|-------------|-------------|-------------|-------------|-------------|--------------|
| African American | 33% | 22% | 44% | 58% | 67% | 72% | 92% |
| Asian | 78% | 64% | 88% | 90% | 93% | 96% | 97% |
| Hispanic | 67% | 48% | 86% | 76% | 81% | 86% | 90% |
| White | 84% | 71% | 87% | 89% | 89% | 93% | 98% |

Class of 2014 Exact Cohort - ELA

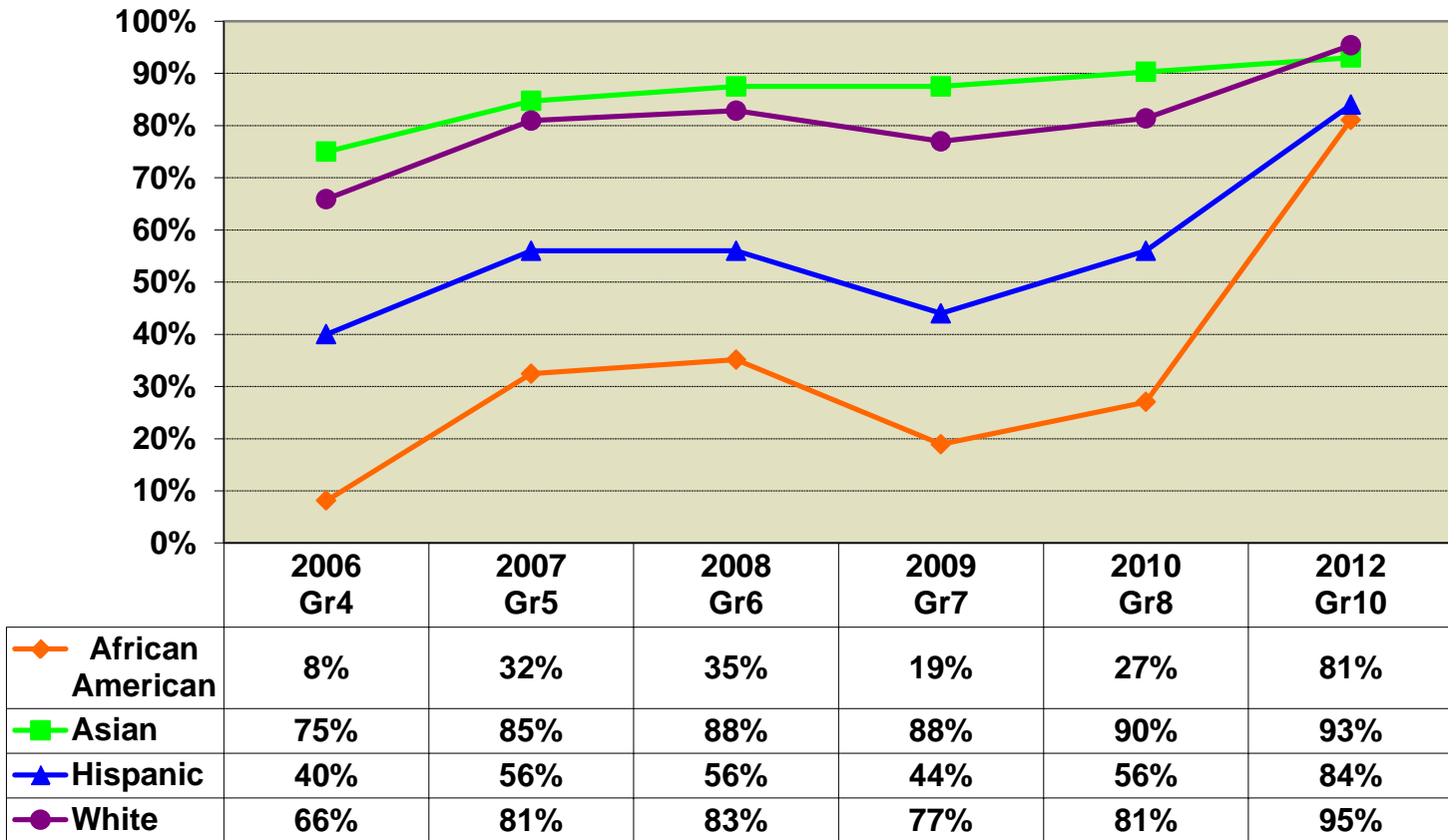
ELA MCAS: Percent Scoring \geq Proficient Overall and by Selected Subgroups



| | 2005 Gr3 | 2006 Gr4 | 2007 Gr5 | 2008 Gr6 | 2009 Gr7 | 2010 Gr8 | 2012 Gr10 |
|-------------------------------|-------------|-------------|-------------|-------------|-------------|-------------|--------------|
| ◆ Low Income | 54% | 42% | 73% | 73% | 77% | 81% | 90% |
| ■ SpEd | 51% | 30% | 53% | 55% | 63% | 71% | 89% |
| ▲ 1st Language Not English | 71% | 62% | 88% | 86% | 90% | 95% | 97% |
| ● Overall | 79% | 67% | 85% | 87% | 88% | 92% | 97% |

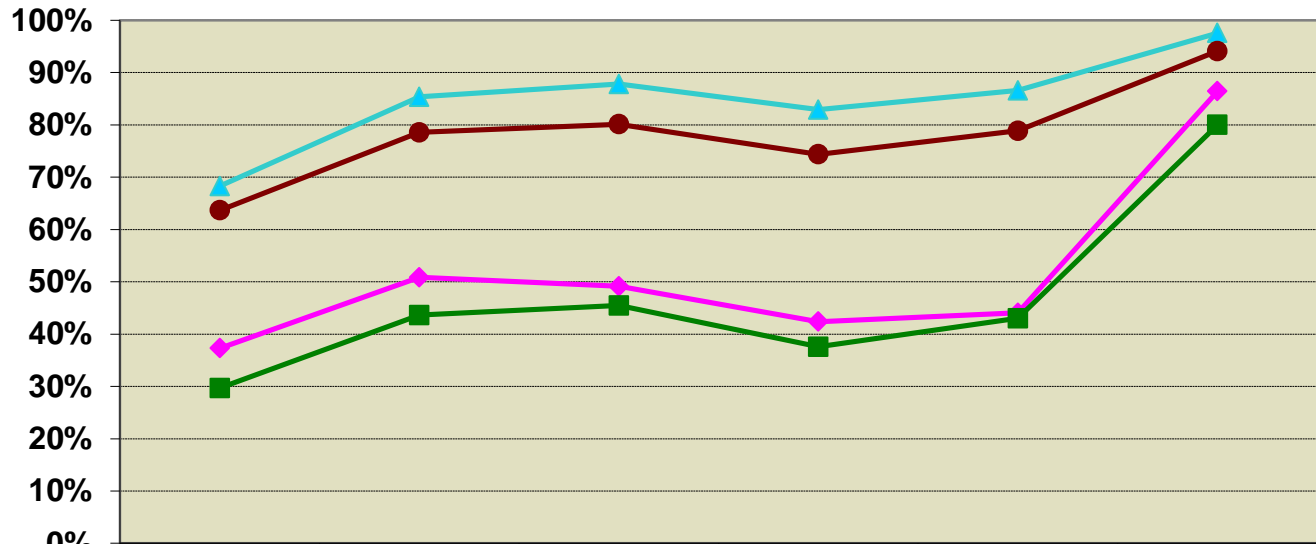
Class of 2014 Exact Cohort - Math

Math MCAS: Percent Scoring \geq Proficient by Race Subgroup



Class of 2014 Exact Cohort - Math

Math MCAS: Percent Scoring \geq Proficient Overall and by Selected Subgroups

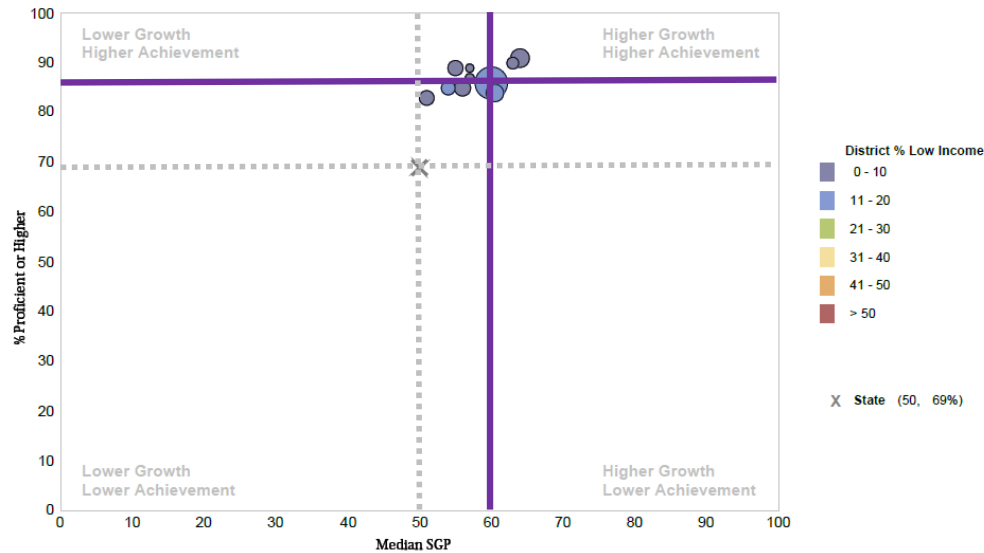


| | 2006 Gr4 | 2007 Gr5 | 2008 Gr6 | 2009 Gr7 | 2010 Gr8 | 2012 Gr10 |
|-------------------------------|-------------|-------------|-------------|-------------|-------------|--------------|
| ◆ Low Income | 37% | 51% | 49% | 42% | 44% | 86% |
| ■ SpEd | 30% | 44% | 45% | 38% | 43% | 80% |
| ▲ 1st Language Not English | 68% | 85% | 88% | 83% | 87% | 98% |
| ● Overall | 64% | 79% | 80% | 74% | 79% | 94% |

Student Growth Percentile (SGP)

- Measure of growth relative to a state-wide peer group with similar historical performance.
- ELA and Math only
- Subgroups reported only when $N \geq 20$
- Median Student Growth Percentiles (subgroups, schools, districts)

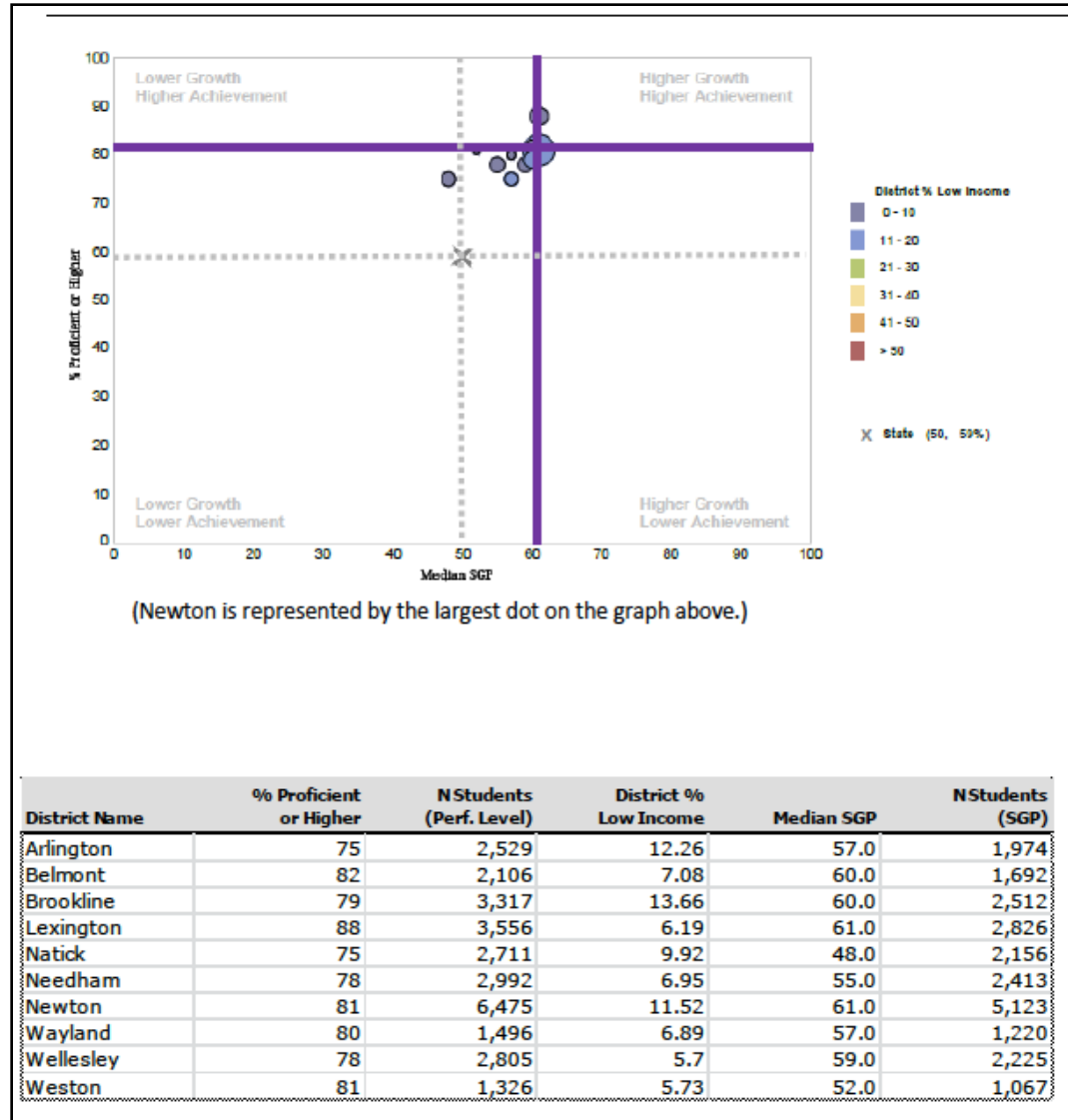
Newton and Similar Communities - ELA



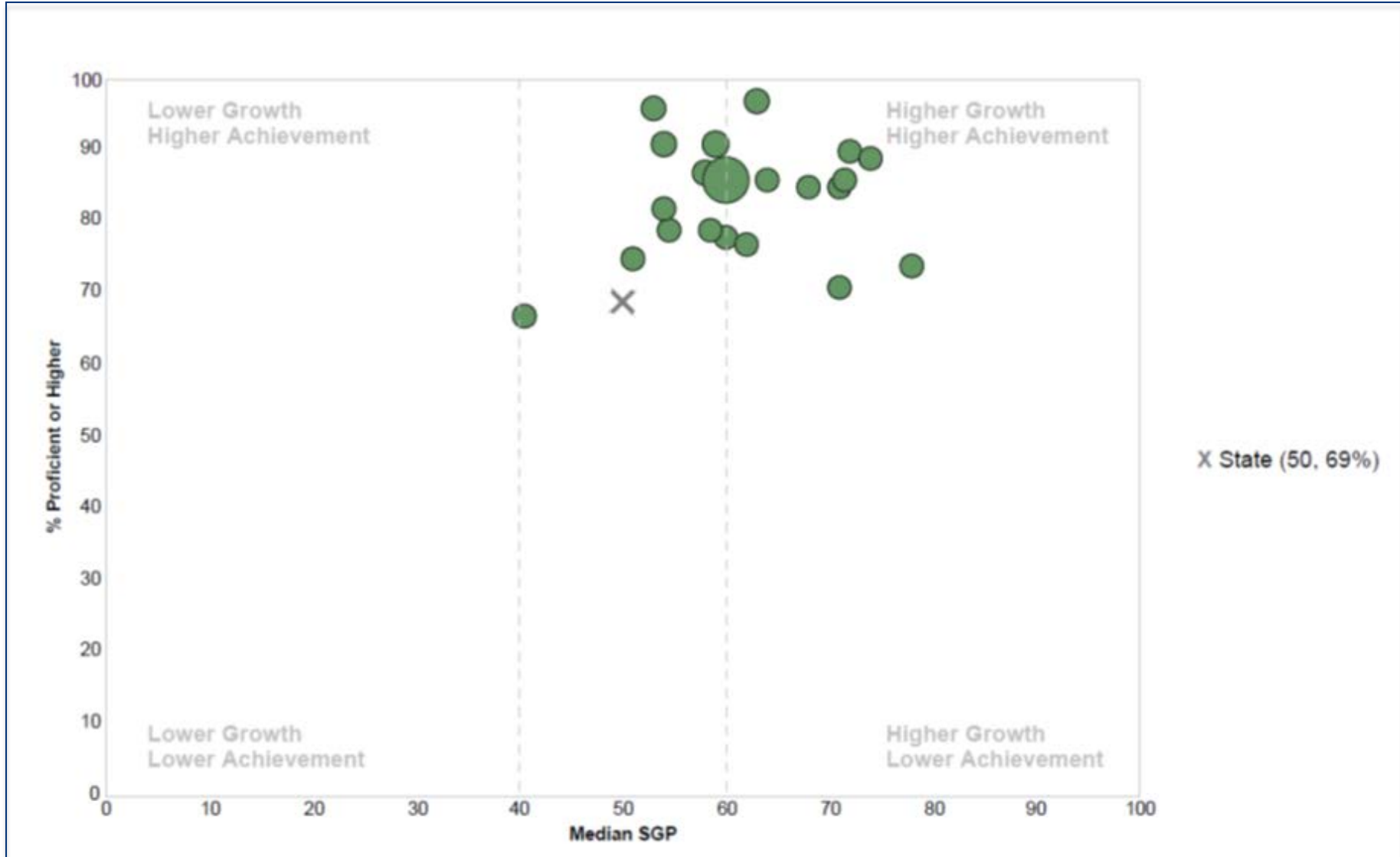
(Newton is represented by the largest dot on the graph above.)

| District Name | % Proficient or Higher | N Students (Perf. Level) | District % Low Income | Median SGP | N Students (SGP) |
|---------------|------------------------|--------------------------|-----------------------|------------|------------------|
| Arlington | 85 | 2,523 | 12.21 | 54.0 | 1,977 |
| Belmont | 90 | 2,100 | 7.10 | 63.0 | 1,682 |
| Brookline | 84 | 3,306 | 13.67 | 60.5 | 2,498 |
| Lexington | 91 | 3,547 | 6.23 | 64.0 | 2,833 |
| Natick | 83 | 2,711 | 9.96 | 51.0 | 2,166 |
| Needham | 85 | 2,995 | 6.98 | 56.0 | 2,418 |
| Newton | 86 | 6,462 | 11.48 | 60.0 | 5,094 |
| Wayland | 87 | 1,494 | 6.89 | 57.0 | 1,217 |
| Wellesley | 89 | 2,805 | 5.60 | 55.0 | 2,217 |
| Weston | 89 | 1,327 | 5.65 | 57.0 | 1,065 |

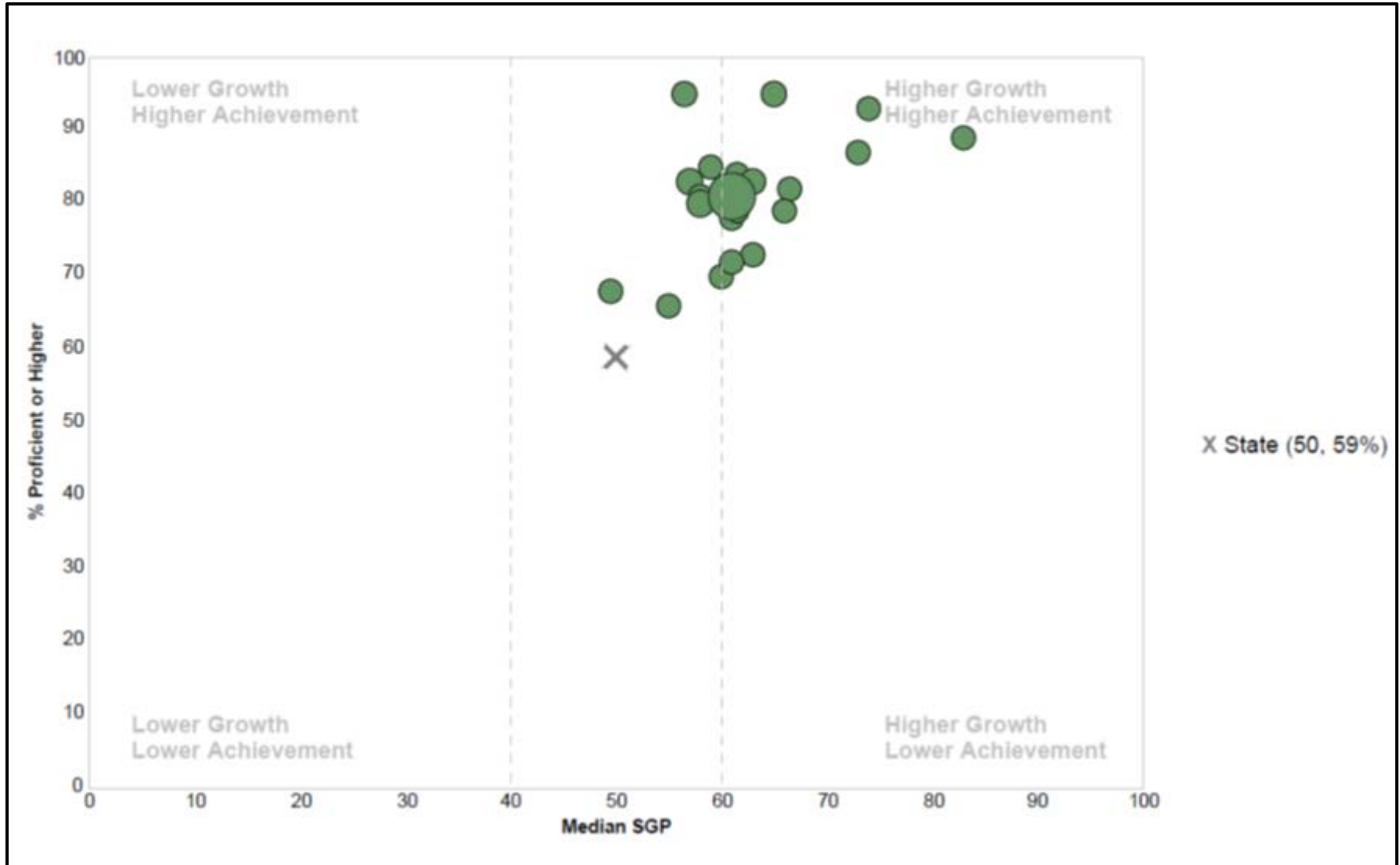
Newton and Similar Communities - Math



Achievement and Growth by School - ELA



Achievement and Growth by School-Math



Progress and Performance Index (PPI)

- New measure to assess district and school improvement that includes both growth and proficiency.
- Replaces AYP, as a measure of Accountability.
- Includes data on narrowing proficiency gaps, growth (SGP), MCAS participation, graduation rates and dropout rates.
- Schools/Districts must narrow achievement gaps by 50% over a six-year period (2011-2017)

Accountability Status

- Schools and districts are classified into a level based on a four-year trend, in Levels 1-5.
- Districts are classified based on the level of lowest-performing school.
- Level 1: PPI of 75+ (for the aggregate and High Needs group).
- Level 2,3,4,5: PPI < 75 or low-MCAS participation.
- NPS has no Level 3, 4, or 5 schools.

District PPI by Subgroup

| 2012 District Cumulative PPI for All Students and Subgroups | | |
|---|------------------------|------------------------|
| Student Group | Cumulative PPI (1-100) | Progress Toward Target |
| All Students | 89 | Met Target |
| High Needs | 71 | Did Not Meet Target |
| Low Income | 66 | Did Not Meet Target |
| ELL and Former ELL | 88 | Met Target |
| Students with disabilities | 69 | Did Not Meet Target |
| Asian | 100 | Met Target |
| African American/Black | 63 | Did Not Meet Target |
| Hispanic/Latino | 74 | Did Not Meet Target |
| Multi-race, Non-Hispanic/Latino | 100 | Met Target |
| White | 95 | Met Target |

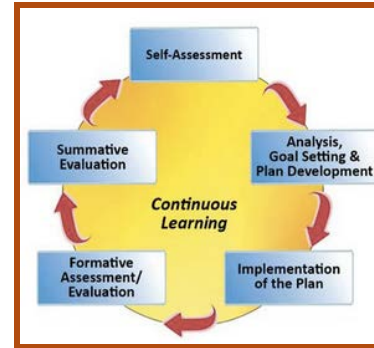
School PPI and Accountability Levels

| 2012 School and District PPI and Accountability Levels | | | | |
|--|---------|----------------|------------------------------|--|
| School/District | PPI All | PPI High Needs | Accountability Determination | Reason for Level Determination |
| Angier | 95 | 49 | Level 2 | Not meeting gap narrowing goals |
| Bowen | 95 | 59 | Level 2 | Not meeting gap narrowing goals |
| Burr | 100 | 91 | Level 1 | Meeting gap narrowing goals |
| Cabot | 75 | 95 | Level 1 | Meeting gap narrowing goals |
| Countryside | 91 | 83 | Level 1 | Meeting gap narrowing goals |
| Franklin | 76 | 62 | Level 2 | Not meeting gap narrowing goals |
| Horace Mann | 100 | 96 | Level 1 | Meeting gap narrowing goals |
| Lincoln-Eliot | 78 | 67 | Level 2 | Not meeting gap narrowing goals |
| Mason-Rice | 100 | 99 | Level 1 | Meeting gap narrowing goals |
| Memorial Spaulding | 65 | 65 | Level 2 | Not meeting gap narrowing goals |
| Peirce | 100 | 86 | Level 1 | Meeting gap narrowing goals |
| Underwood | 100 | 100 | Level 1 | Meeting gap narrowing goals |
| Ward | 100 | 91 | Level 1 | Meeting gap narrowing goals |
| Williams | 95 | 61 | Level 2 | Not meeting gap narrowing goals |
| Zervas | 86 | 49 | Level 2 | Not meeting gap narrowing goals |
| Bigelow Middle | 86 | 82 | Level 1 | Meeting gap narrowing goals |
| Brown Middle | 90 | 87 | Level 1 | Meeting gap narrowing goals |
| Day Middle | 86 | 71 | Level 2 | Not meeting gap narrowing goals |
| Oak Hill Middle | 83 | 71 | Level 2 | Not meeting gap narrowing goals |
| North High | 90 | 81 | Level 1 | Meeting gap narrowing goals |
| South High | 95 | 83 | Level 1 | Meeting gap narrowing goals |
| Newton District | 89 | 71 | Level 2 | District assigned the level of its lowest level school |

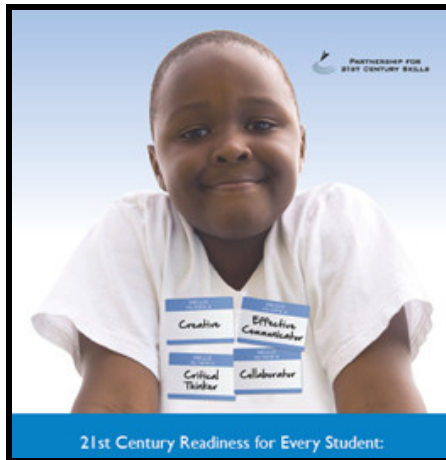
Time of Transition



Aligning to new curriculum standards



Implementing new evaluation system



Incorporating 21st C Skills and Universal Design for Learning



Accessing the Internet and Integrating Technology



Questions?



References

- Department of Elementary and Secondary Education NPS Profile Assessments:
http://profiles.doe.mass.edu/mcas/performance_level.aspx?linkid=32&orgcode=02070000&orgtypecode=5&
- Department of Elementary and Secondary Education Statewide Reports:
http://profiles.doe.mass.edu/state_report/mcas.aspx
- Department of Elementary and Secondary Education Data Warehouse (EDW):
<https://www4.doemass.org/auth/Login>