



STUDENT ASSIGNMENT REVIEW

UPDATE & CURRENT DIRECTION

Newton Public Schools

School Committee

April 28, 2015

Today's Focus

- How increased enrollment at new schools can be phased-in
 - Not dependent on specific boundary changes
- Scenarios are used as examples to illustrate data
 - *No new scenarios*
 - Community feedback on scenarios is being received and considered
- Incoming students only to be re-districted
 - A 2015-16 Kindergarten possibly to be moved to Zervas
- Hybrid re-assignment draft for May 11 public forum

Initial Goals

1. Size districts to match new capacities
 - Angier: 465 students, 22 classrooms
 - Zervas: 490 students, 24 classrooms
 - Cabot: 480 students, 24 classrooms
2. Re-size districts to an enrolled capacity of 93% to 96%
 - Leave room for future growth
 - Ease capacity at other schools
3. Methods:
 - Expand to adjacent districts
 - Incorporate existing buffer zones
 - Utilize 1 mile driving areas

Current Phase

1. Add all students and integrate with enrollment projections
2. Define options for re-assigning students in optimal time-frame
3. Refine scenarios

Moving toward:

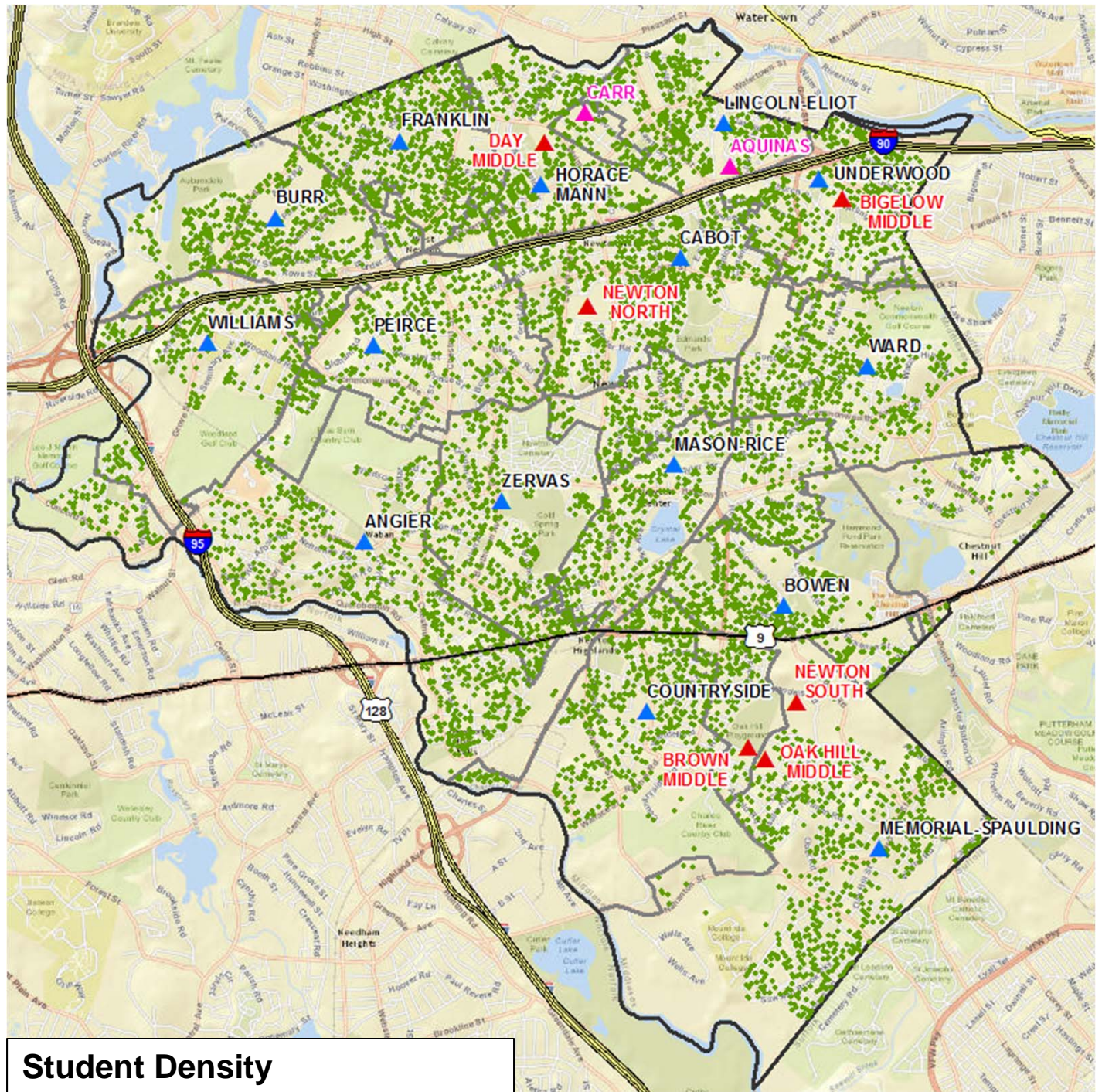
- A balanced proposal
- Objectively evaluated
- Based on criteria matrix

GEOGRAPHIC CONTEXT:

APPLIED
GEOGRAPHICS, INC.

NEWTON PUBLIC
SCHOOLS

NEWTON, MA

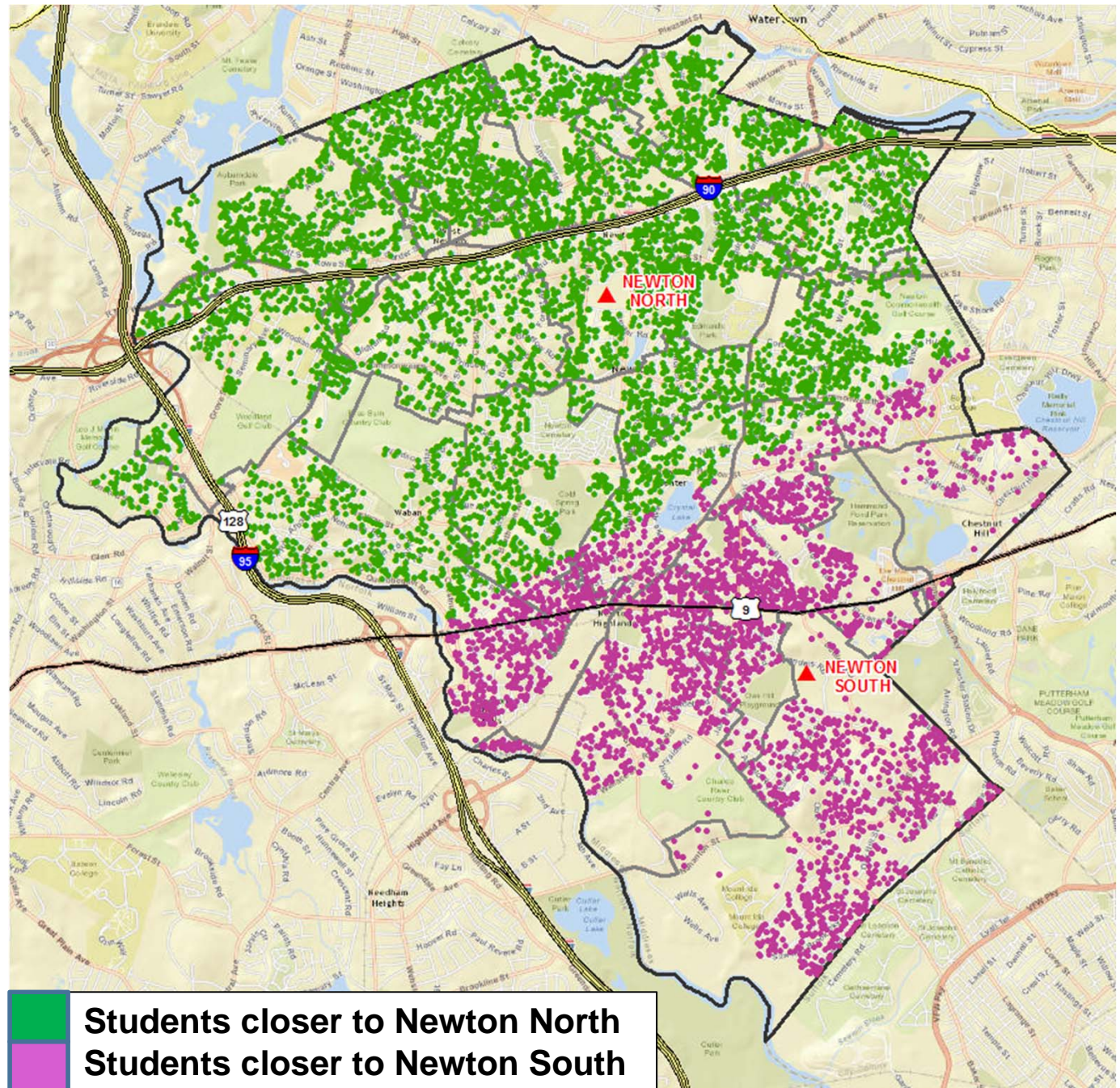


GEOGRAPHIC CONTEXT:

APPLIED
GEOGRAPHICS, INC.

NEWTON PUBLIC
SCHOOLS

NEWTON, MA

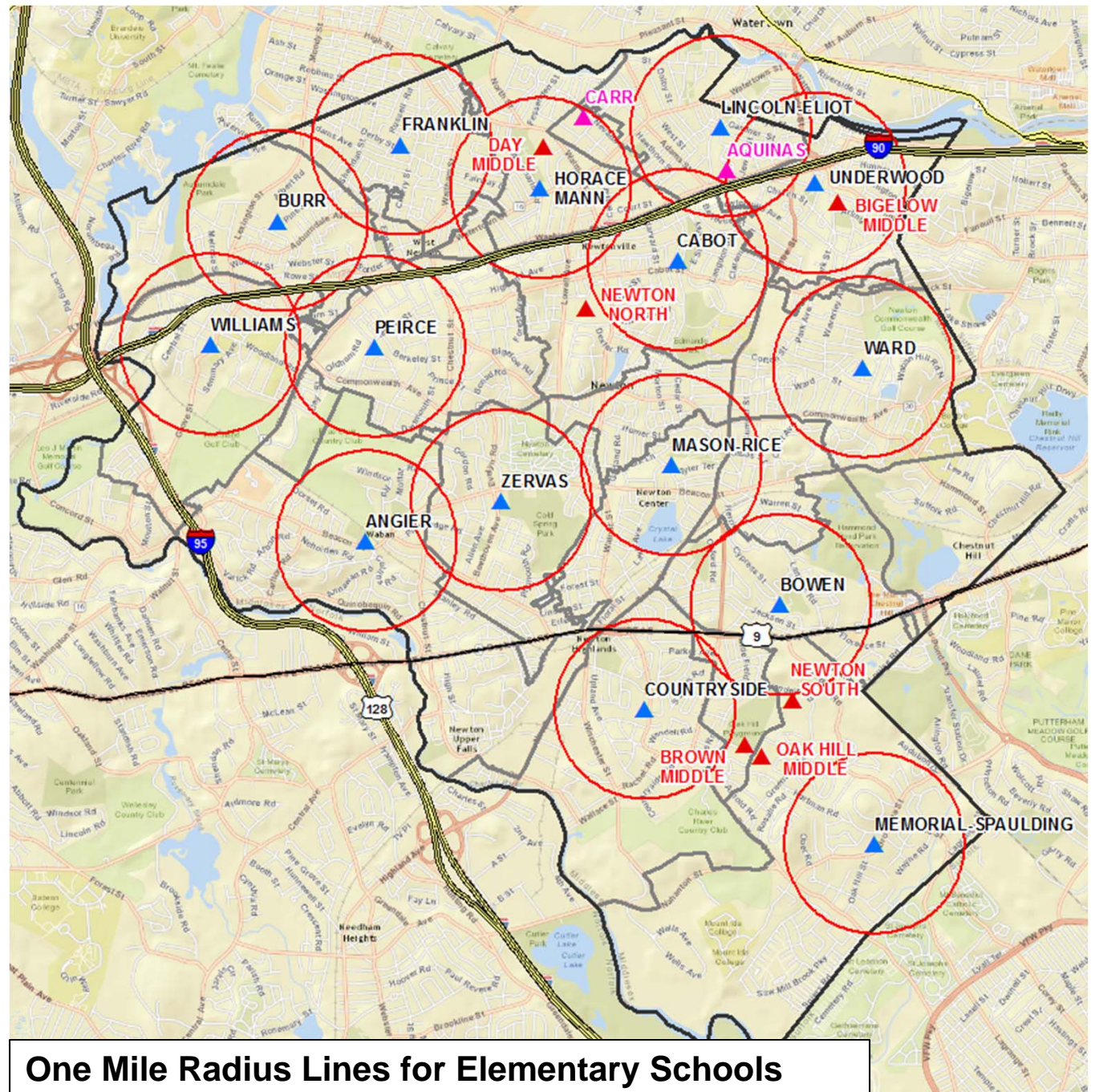


GEOGRAPHIC CONTEXT:

APPLIED
GEOGRAPHICS, INC.

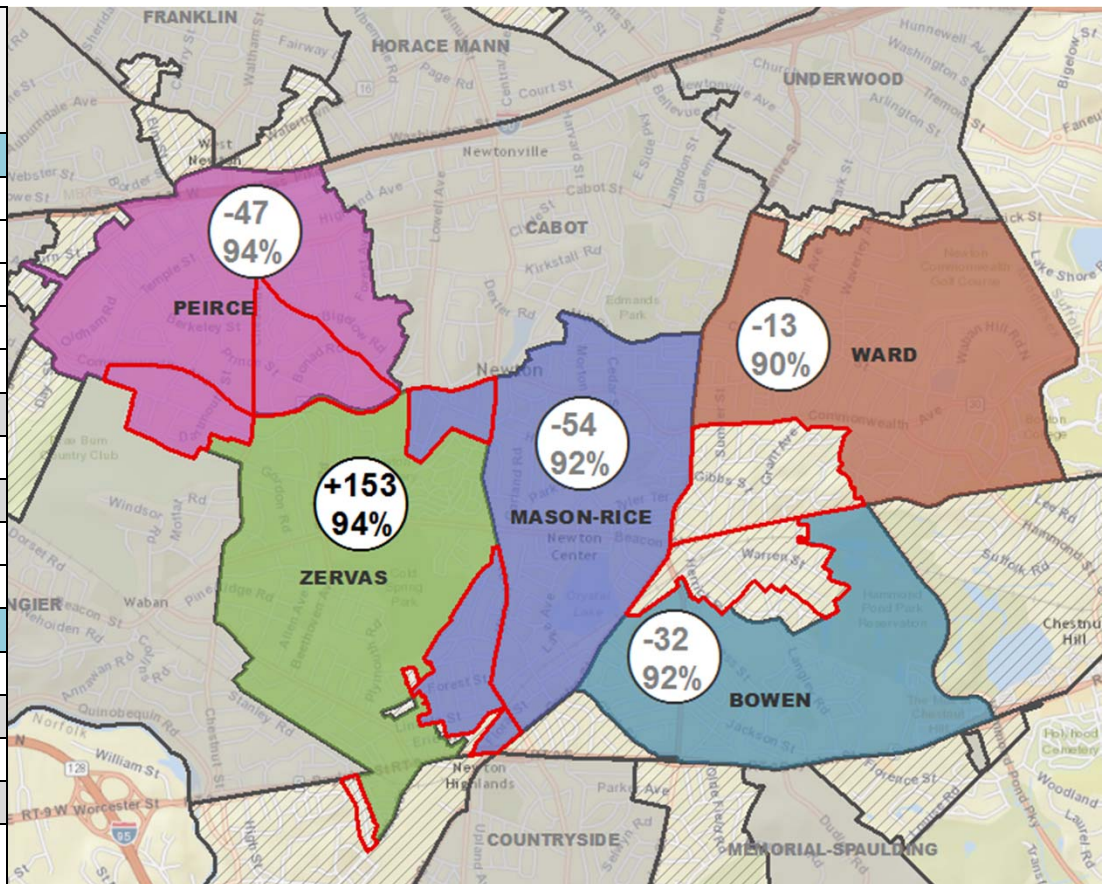
NEWTON PUBLIC
SCHOOLS

NEWTON, MA



EXAMPLE based on Scenario A.4

	Current % Capacity	Final % Capacity	Final Scenario Enrollment	Scenario Change
North				
Burr	108%	108%	424	
Cabot	87%	87%	418	
Franklin	95%	95%	413	
Horace Mann	126%	126%	434	
Lincoln-Eliot	98%	98%	337	
Peirce	111%	94%	259	-47
Underwood	93%	93%	341	
Ward	94%	90%	291	-13
Subtotal	100%	98%	2,917	-60
South				
Angier	86%	86%	402	
Bowen	98%	92%	443	-32
Countryside	101%	101%	466	
Mason-Rice	104%	92%	424	-54
Memorial-Spaulling	90%	90%	434	
Williams	106%	106%	292	
Zervas	63%	94%	462	153
Other				-7
Subtotal	92%	94%	2,923	60
Total	96%	96%	5,833	0



Components (Areas of Change)

Buffer Areas

Detailed Data – Capacity Changes over Time (EXAMPLE based on A.4)

Capacity Projection - Percents

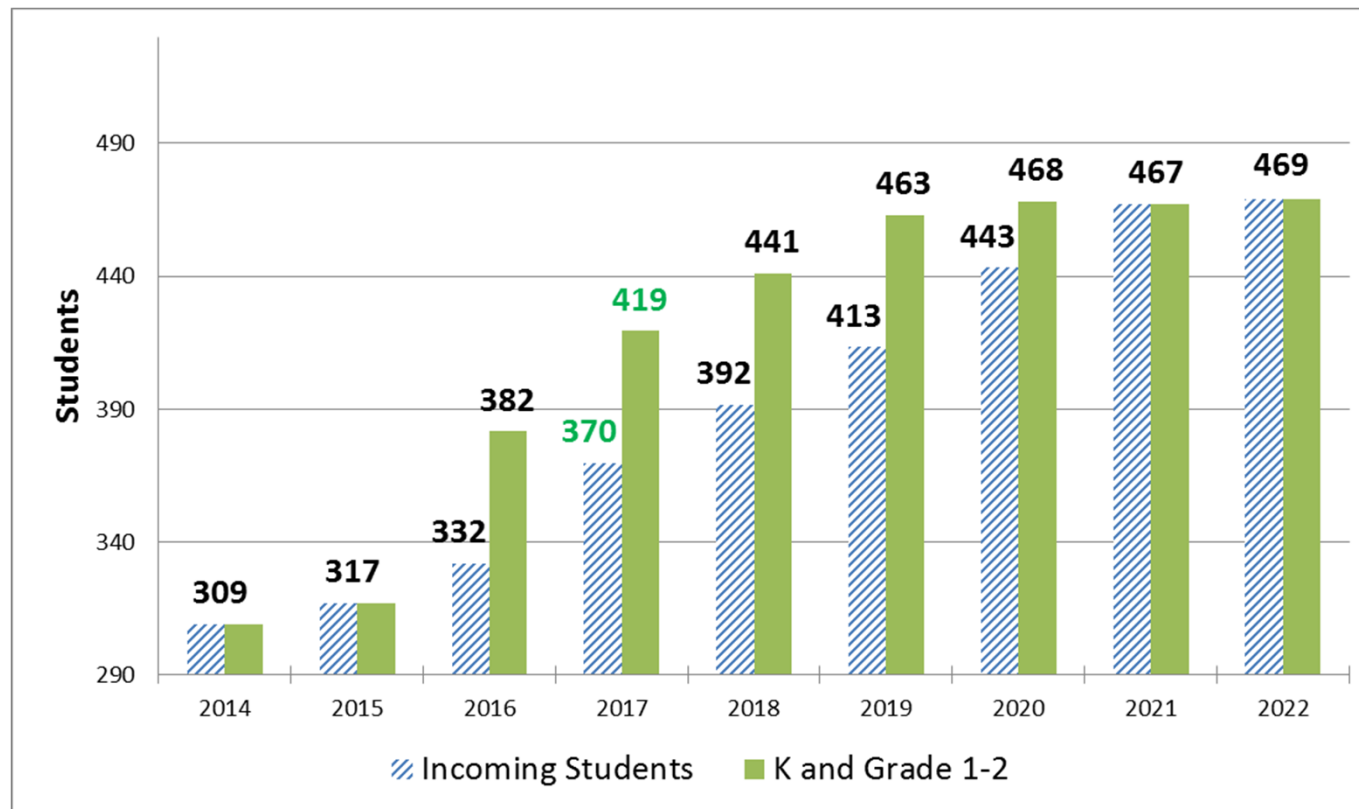
Year	2014	2015	2016	2017	2018	2019	2020	2021	2022	2023	2024
<u>North Feeding</u>											
Peirce	111%	114%	111%	104%	103%	102%	100%	96%	96%	96%	96%
Ward	94%	96%	98%	99%	99%	98%	99%	99%	99%	99%	98%
<u>South Feeding</u>											
Bowen	98%	100%	100%	102%	102%	96%	97%	96%	96%	95%	95%
Mason-Rice	104%	103%	105%	109%	110%	106%	105%	106%	107%	107%	107%
Zervas	103%	106%	111%	76%	80%	85%	91%	96%	97%	96%	96%

Based on November 2015 Projections

OPTIONS: Student Re-assignment Phase-in

- Re-assign incoming kindergarten students
 - This option is slow
- Re-assign some current students
 - This option is not preferred
- Move an incoming kindergarten class in 2015-16
- Expand re-assignment areas using additional buffer zones
- Utilize out-of-assigned district volunteers

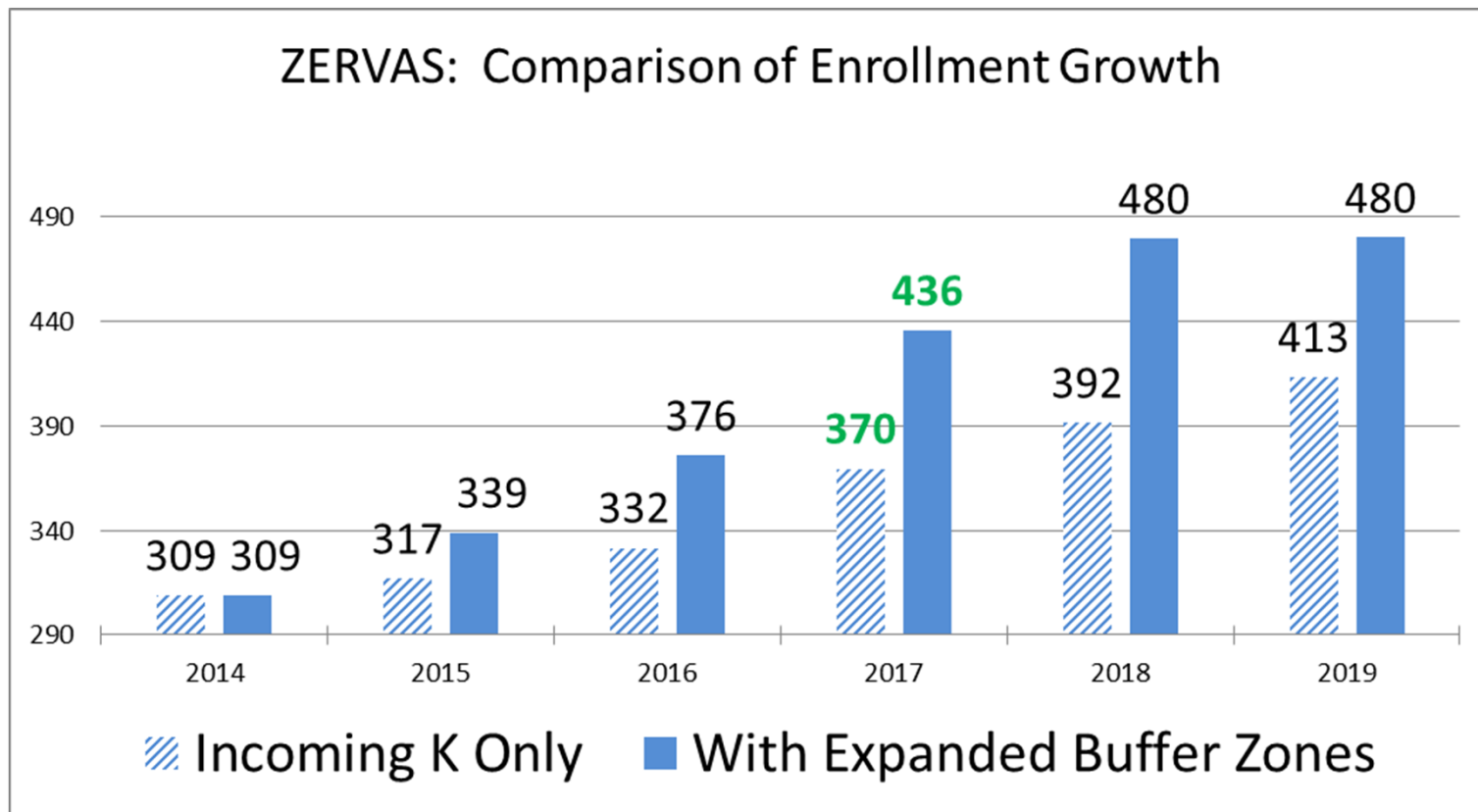
EXAMPLE: Enrollment Growth Over Time at Zervas



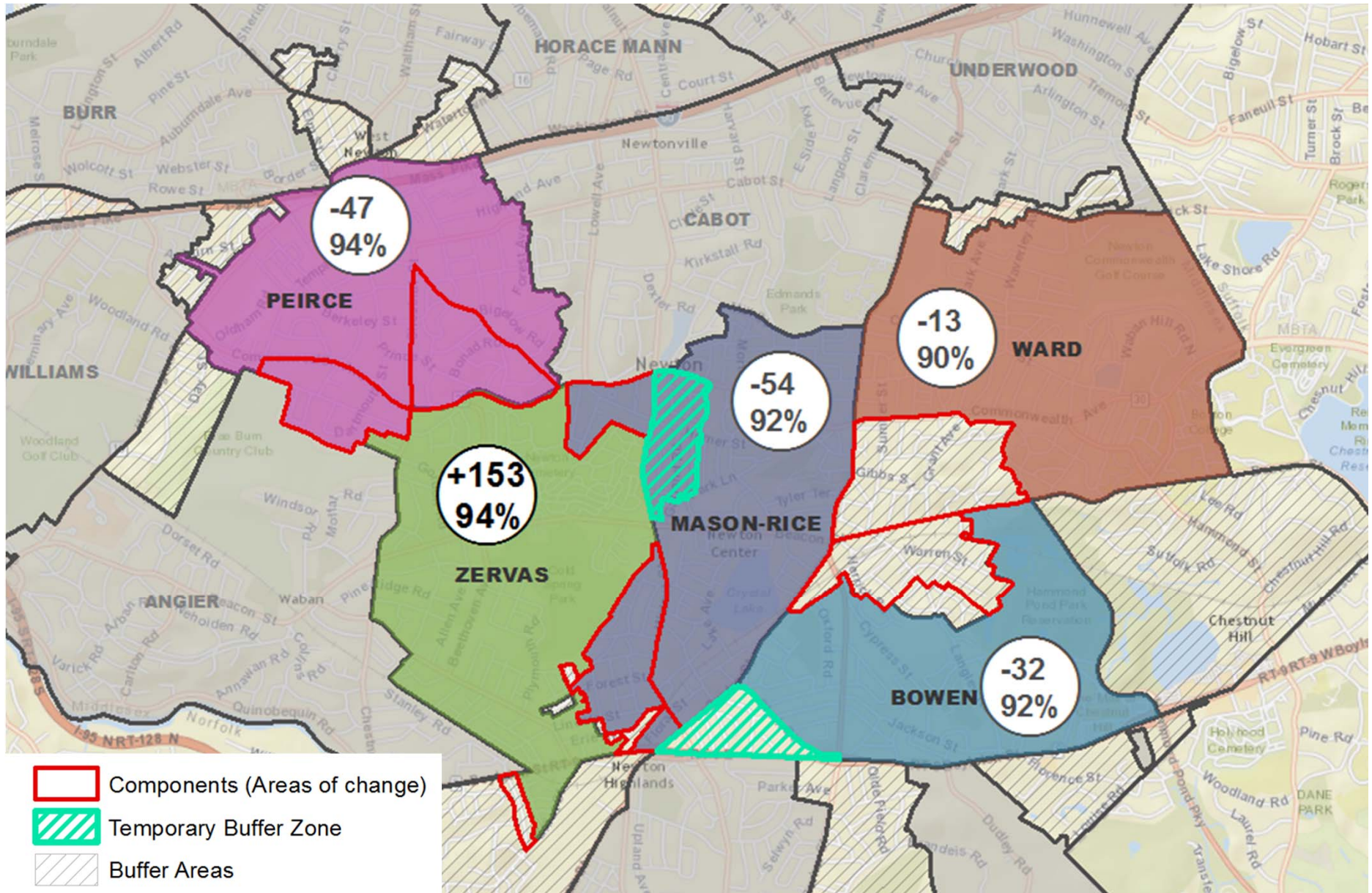
Incoming K only: Enrollment close to target in 2021

K, 1, 2 Phase-in: Enrollment close to target in 2019

EXAMPLE: Enrollment Growth Potential with Additional Buffer Zones



EXAMPLE based on A.4: Additional Buffer Zones to Zervas



Next Phase of Work

- Refine scenarios
- Incorporate feedback
- Hybrid re-assignment draft for May 11th public forum



Feedback Requested

Public Forum

Monday, May 11, 2015

5:45 p.m. – 7:00 p.m.

Ed. Center Room 210

Information is Available

Click: Our District / District Initiatives / Expanding Capacity

<http://www.newton.k12.ma.us/district-initiatives>

- ✓ Link added to 'Find my School' application
- ✓ Notice sent to Newton realtors

➤ **1200 HITS SINCE MARCH 26th**