

Buffer Zone Recommendation

2016-17 Short-term Enrollment Planning

School Committee – March 14, 2016

Recommendation

- Expand the existing, small Countryside-Memorial Spaulding buffer zone effective October 1, 2016
 - Increases district's options for student placements for move-ins in 2016-17 and in future years
 - Allows adequate lead time for families
 - To plan for after care and other concerns
- Maintain all current buffer zones

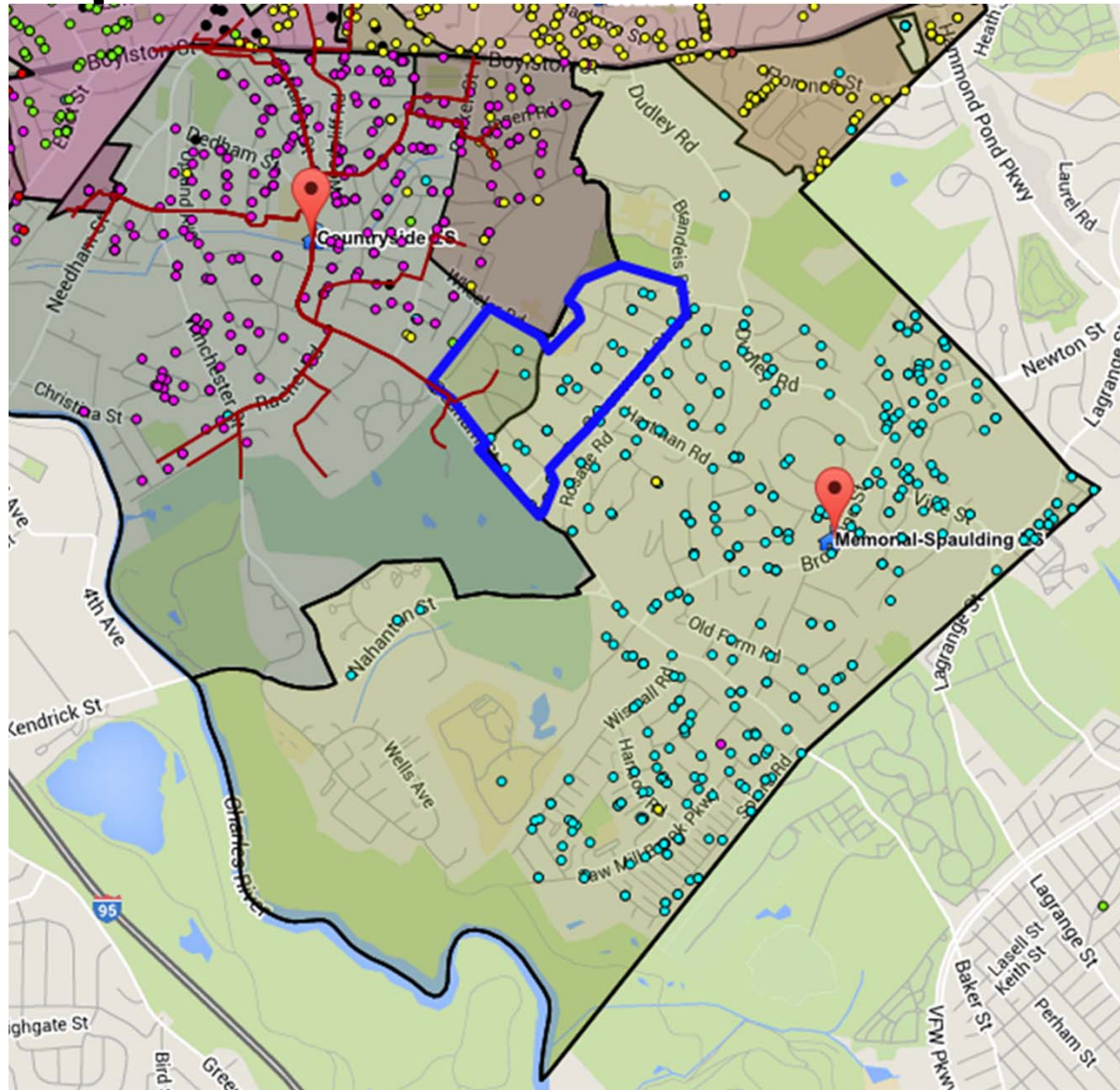
Key Aspects of Buffer Zones

- Buffer zone residents are districted to two elementary schools
- Effect is on families enrolling for the first time who request a school, subject to approval by the Office of Elementary Education
- Students follow their siblings
- Students follow their school's feeder pattern

Implementation of Buffer Zones

- Annual notification process:
 - November letter to incoming K parent/guardians (census)
 - January letter to buffer zone families
 - Mid-May notification of school assignment
- Ongoing school-based notification for families moving in to Newton
- Process takes parent preferences into account
- Second choice placements are made to avoid large class sizes
 - This is also important parent preference

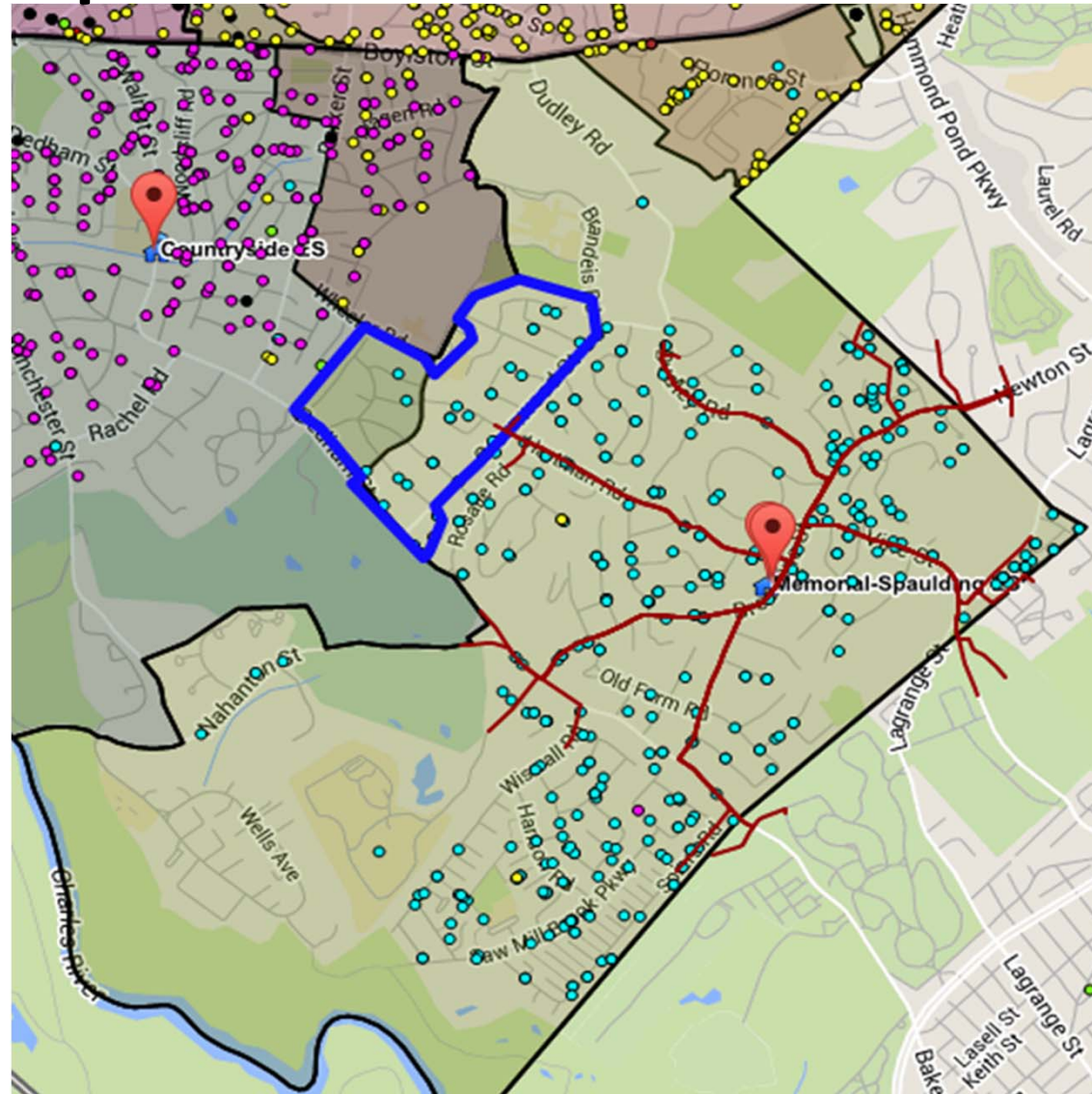
Expanded Buffer Zone in Context



Red Lines - Travel Polygon showing distances up to .75 miles

Blue Outline - Expanded Buffer Zone area

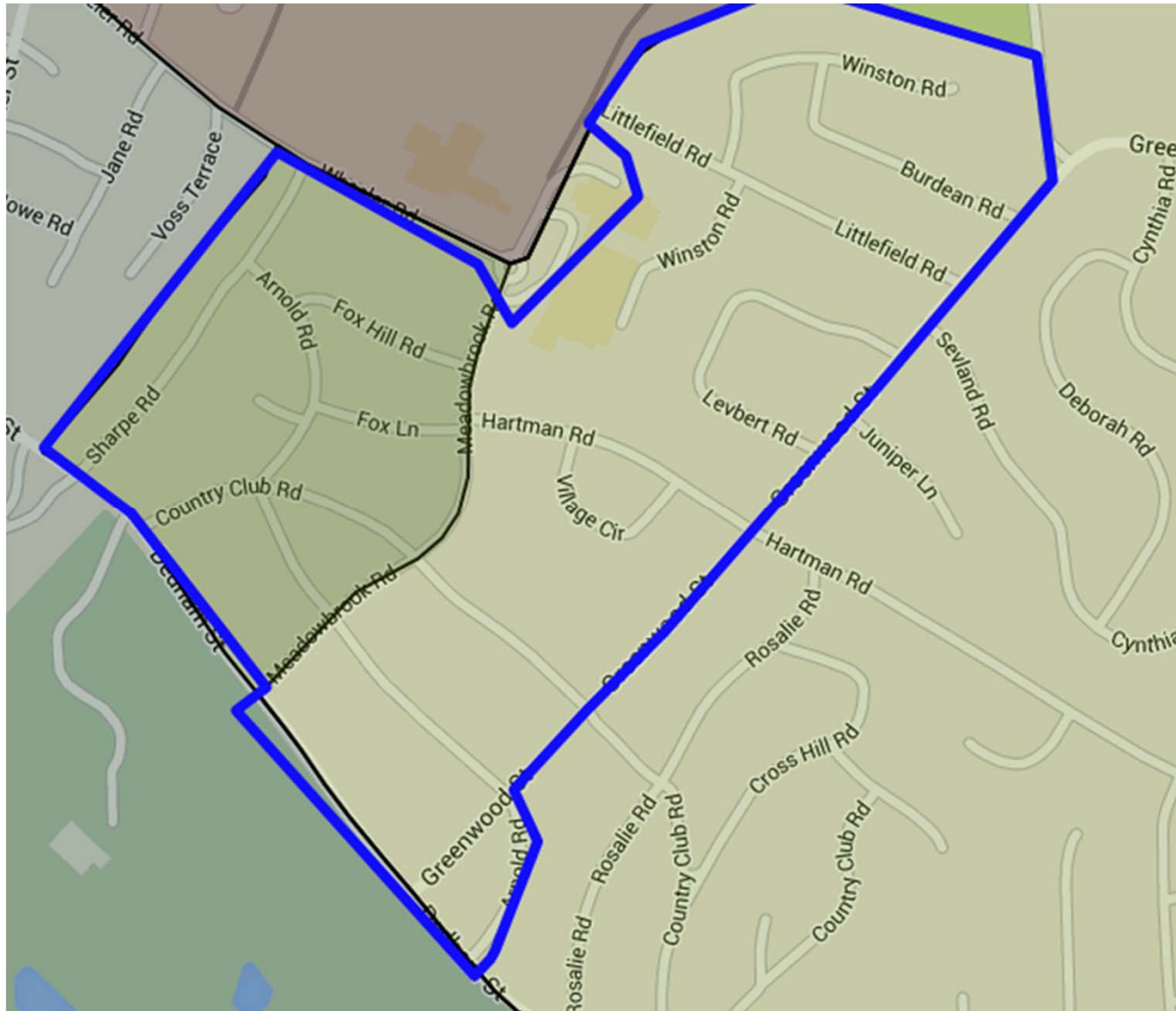
Expanded Buffer Zone in Context



Red Lines - Travel Polygon showing distances up to .75 miles

Blue Outline - Expanded Buffer Zone area

Expanded Buffer Zone – Detail



Expanded Countryside-Memorial Spaulding Buffer Zone

Estimated Buffer Zone Placements (Per Year)									
School	K	1	2	3	4	5	Total	Avg.	Rounded
Bowen ES			1		1		2	0.33	0
Countryside ES				1			1	0.17	0
Memorial- Spaulding ES	8	2	3	3	10	5	31	5.17	5
Total Students	8	2	4	4	11	5	34	5.67	6

➤ City-wide average of buffer zone size is 46 students