

STUDENT ASSIGNMENT REVIEW

Angier, Zervas and Cabot

A Preview of the Process

Newton Public Schools
February 26, 2015

A PREVIEW OF THE PROCESS

★ PROPOSED TIMELINE ALLOWS FOR:

1. Community feedback
2. Information provided at School Committee /public meetings
3. Lead time for implementation

★ CRITERIA FOR DECISIONS

- ★ Continued review as needed

★ USE OF DATA, TOOLS, CONSULTANT RESOURCES

- ★ Research multiple options and find the most optimal approach

TIMELINE

STUDENT ASSIGNMENT PROCESS PROPOSED TIMELINE

	2014				2015												2016												2017								
<u>School Building Projects</u>	Sep	Oct	Nov	Dec	Jan	Feb	Mar	Apr	May	Jun	Jul	Aug	Sep	Oct	Nov	Dec	Jan	Feb	Mar	Apr	May	Jun	Jul	Aug	Sep	Oct	Nov	Dec	Jan	Feb	Mar	Apr	May	Jun	Jul	Aug	Sep
Angier Construction	Angier in Construction																																				
New Angier Opens																	★																				
Zervas Construction																	Zervas in Construction																				
New Zervas Opens																													★								
Cabot Construction																																					
	2014				2015												2016												2017								
<u>Student Assignment Process</u>	Sep	Oct	Nov	Dec	Jan	Feb	Mar	Apr	May	Jun	Jul	Aug	Sep	Oct	Nov	Dec	Jan	Feb	Mar	Apr	May	Jun	Jul	Aug	Sep	Oct	Nov	Dec	Jan	Feb	Mar	Apr	May	Jun	Jul	Aug	Sep
Working Group Appointed by School Committee																																					
Student Assignment Group Working																																					
Initial Communication / Letter to the community																																					
School Committee Presentation: What to Expect																																					
Public Meeting																																					
School Committee Review of Options																																					
Public Meeting																																					
School Committee Meeting / Vote on Options																																					
Communication on policy changes to community																																					
Voluntary Student Re-Assignments																																					
Student Assignment Changes Begin																																					
New Zervas Opens																													★								

EVALUATION CRITERIA

**NEWTON
PUBLIC
SCHOOLS
STUDENT
ASSIGNMENT
REVIEW
PROCESS
FOR ANGIER,
ZERVAS, CABOT**

DRAFT

CRITERIA FOR EVALUATING OPTIONS

Enrollment

- | | |
|---|---|
| 1 | Re-assign target number of students to new schools |
| 2 | Achieve target enrollment at new schools within desired time frame |
| 3 | Balance enrollment at elementary schools for instruction and other district programming |
| 4 | Maintain or improve balance of feeder patterns to middle schools |
| 5 | Maintain or improve feeder patterns to high schools and balance between high schools |

Family Impact

- | | |
|---|--|
| 6 | Limit extent of school enrollment changes for enrolled K-5 students |
| 7 | Allowance for simultaneously enrolled K-5 siblings to remain in the same school |
| 8 | Consideration in the out-of-assignment district placement process for other students |

Community

- | | |
|----|---|
| 9 | Use geophysical characteristics (roads, parks, bodies of water) to define boundaries and buffer zones |
| 10 | Maintain or expand safe walk to school routes |
| 11 | Maintain reasonable distance and length of bus routes |

Sustainability

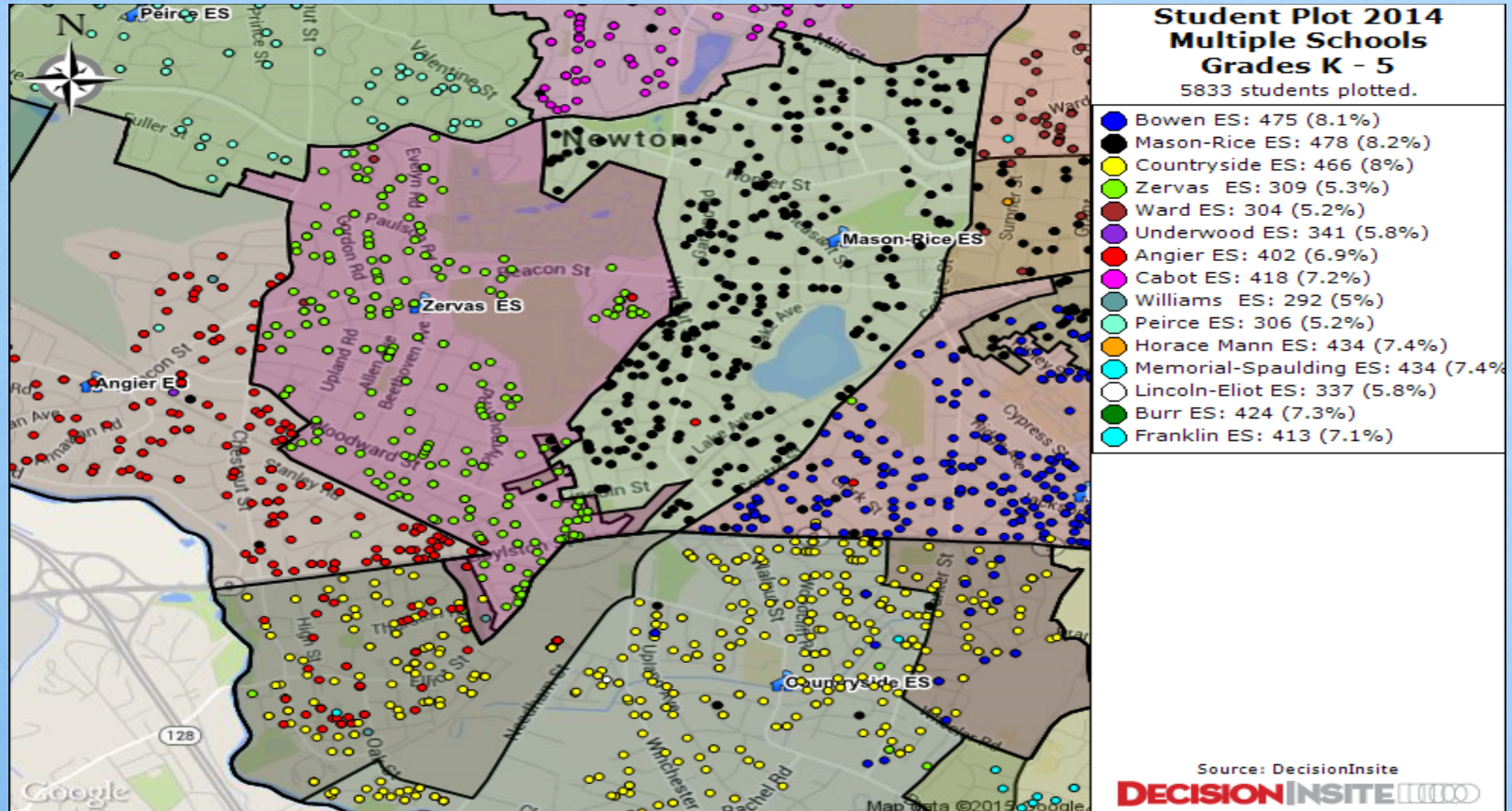
- | | |
|----|---|
| 12 | Account for future use of buffer zones |
| 13 | Account for known/probable future residential development |

Financial

- | | |
|----|----------------------|
| 14 | Transportation costs |
| 15 | Other costs |

DATA, TOOLS, CONSULTANT RESOURCES

INTERACTIVE MAPPING



STUDENT DATA

Zervas District: Current

Geographic Area Projections (RESIDENTS)

Grade	2014	2015	2016	2017	2018	2019
K	48	49	50	51	51	50
1	47	47	48	49	49	49
2	49	48	48	49	50	50
3	39	52	52	51	53	52
4	60	37	50	49	49	52
5	47	62	38	52	51	50
Total Current District	290	295	286	301	303	303

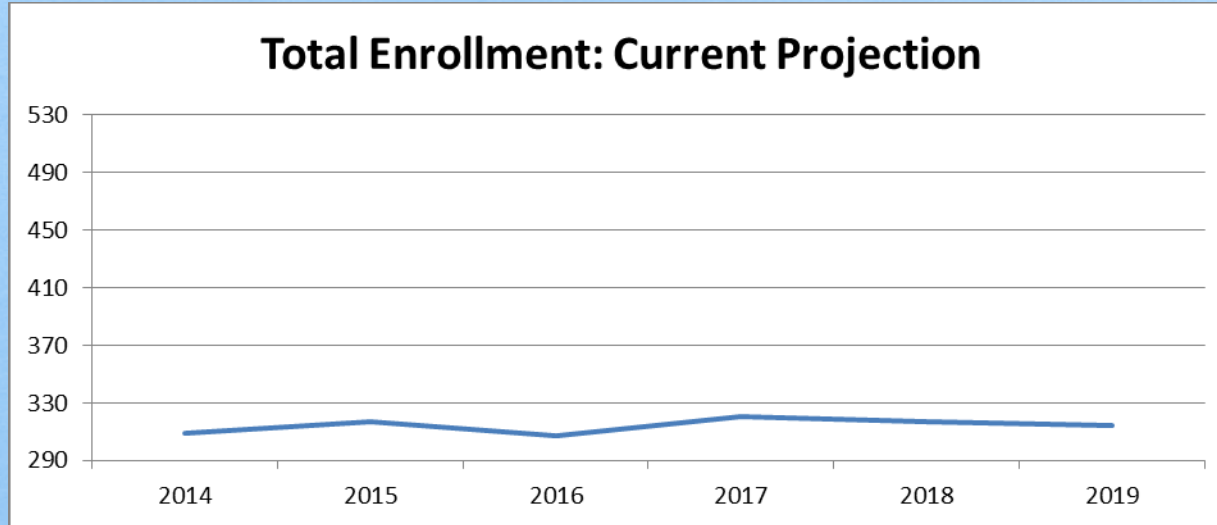
Zervas Expansion Test

Geographic Area Projections (RESIDENTS)

Grade	2014	2015	2016	2017	2018	2019
Total Re-assigned		34	73	108	136	149

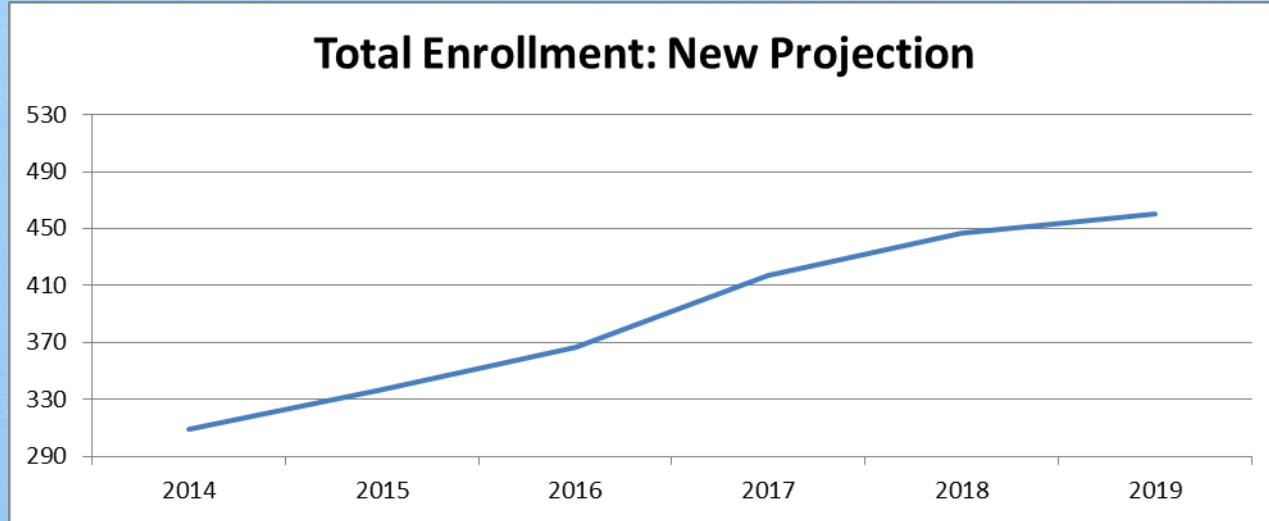
DATA IS FOR DEMONSTRATION PURPOSES ONLY

ZERVAS BEFORE STUDENT REASSIGNMENT



Capacity Projection				NEW SCHOOL COMPLETED		
Year	2014	2015	2016	2017	2018	2019
Capacity	299	299	299	490	490	490
% Used	103%	106%	103%	65%	65%	64%

ZERVAS AFTER STUDENT REASSIGNMENT



Capacity Projection				NEW SCHOOL COMPLETED		
Year	2014	2015	2016	2017	2018	2019
Capacity	299	299	299	490	490	490
% Used	103%	113%	123%	85%	91%	94%

DATA IS FOR DEMONSTRATION PURPOSES ONLY

Public Information

- ✧ Direct communication to families
 - ✧ Superintendent letter
 - ✧ School Committee visits to PTOs
 - ✧ School Committee meetings
 - ✧ Public meetings in spring
- ✧ Online – District website
- ✧ School Committee meetings on NewTV

PRIMARY CONTACTS FOR MORE INFORMATION

- ✧ Steve Siegel, Ward 5
- ✧ Ruth Goldman, Ward 6
- ✧ Newton Public Schools Office of
Business, Finance and Planning
- ✧ Superintendent's Office